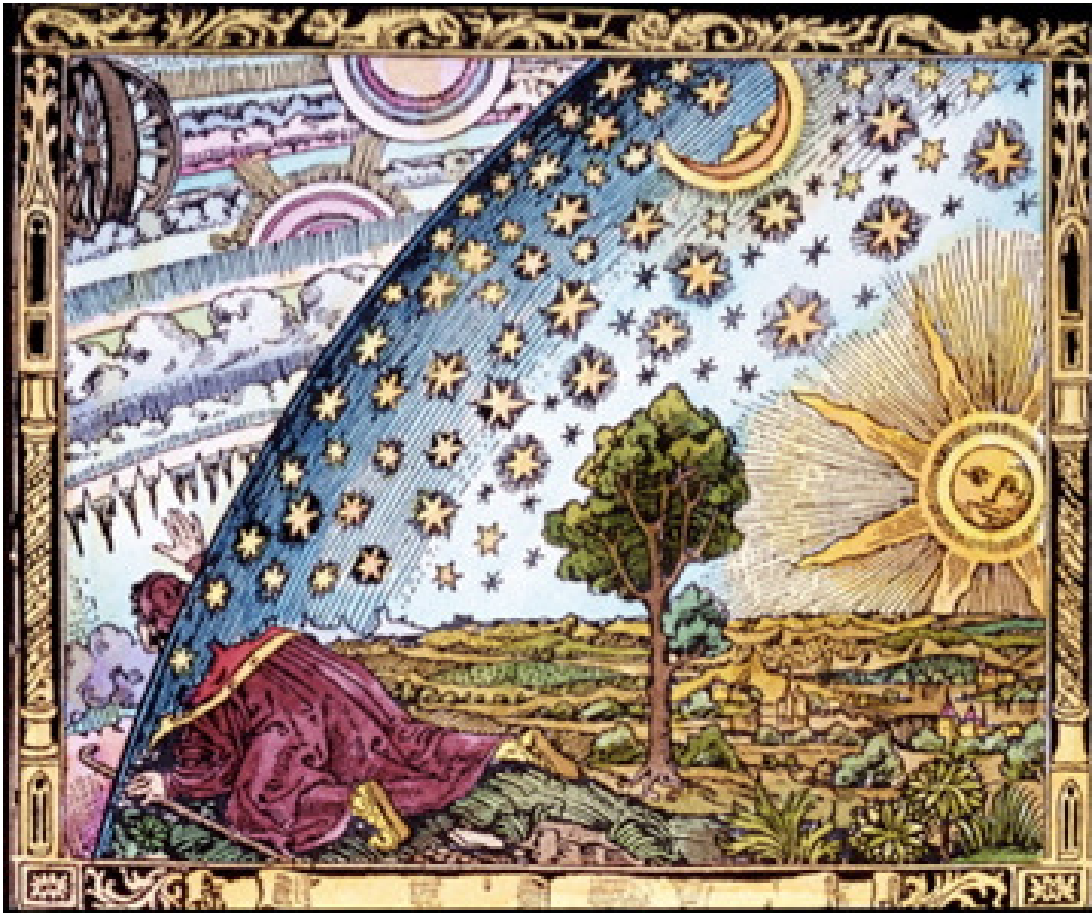


Steven Forrest's  
**SkyLog Report**  
for  
**Georgia O'Keefe**

**June 01, 2012 to May 01, 2013**

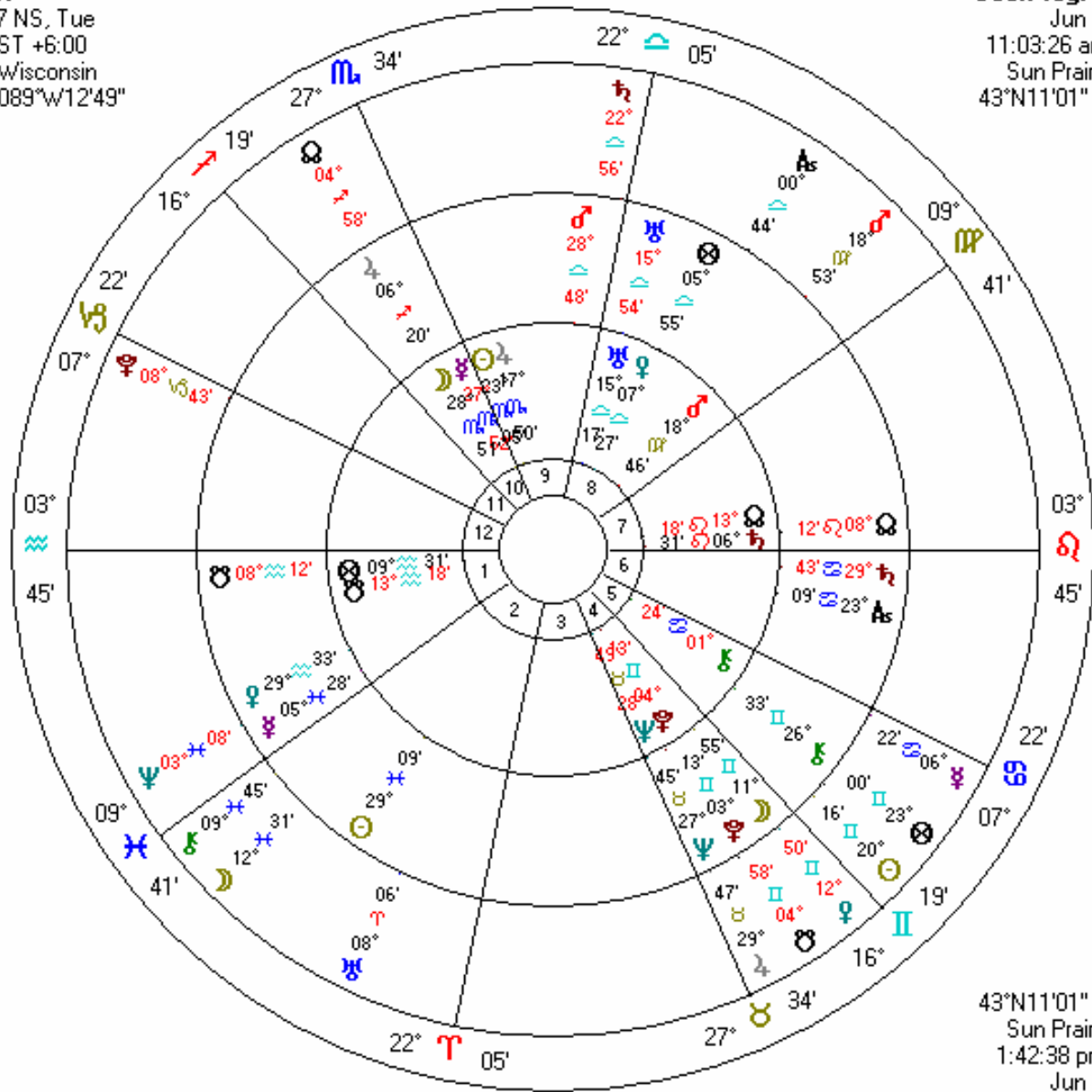


**Report prepared by:**  
**Dana Gerhardt**  
**397 Arnos Road, Talent, OR 97540**  
**541-535-7631**  
**[dana@mooncircles.com](mailto:dana@mooncircles.com)**

# Natal Chart with Progressions and Transits

Inner Wheel  
**Georgia O'Keefe**  
**Natal Chart**  
 Nov 15 1887 NS, Tue  
 12:00 pm CST +6:00  
 Sun Prairie, Wisconsin  
 43°N11'01" 089°W12'49"  
*Geocentric*  
*Tropical*  
*Koch*  
*True Node*

Middle Wheel  
**Georgia O'Keefe**  
**Sec.Prog. SA in Long**  
 Jun 10 2012, Sun  
 11:03:26 am CST +6:00  
 Sun Prairie, Wisconsin  
 43°N11'01" 089°W12'49"  
*Geocentric*  
*Tropical*  
*Koch*  
*True Node*



*True Node*  
*Koch*  
*Tropical*  
*Geocentric*  
 43°N11'01" 089°W12'49"  
 Sun Prairie, Wisconsin  
 1:42:38 pm CDT +5:00  
 Jun 10 2012, Sun  
**Event Chart**  
**Transits Jun 10 2012**  
 Outer Wheel

## Sky Log

### Steven Forrest

Traditional astrologers "make predictions." Often they are correct. But right or wrong, "predictions" turn you into a marionette, with the planets holding your strings. And in my opinion, that is not a very inspiring description of the way the cosmos works, nor a very accurate one. You are vastly more powerful than that. You can, to a great extent, shape your own life. That at least is my belief. The future isn't crystallized. It's a wavering, quivering web of possibilities. How will they manifest? Much depends upon how you wield the magical wild card we call your freedom.

So, what's the use of astrology? In a nutshell, it can help you make better choices. The planets never give a definitive answer to the question "What will happen to me?" Instead, they ask the question. But they ask the question in a very specific way: "Given everything you are, all the bridges you've crossed, all the contracts you've signed, there are several possibilities for what you might do next..." In other words, "Here's the menu. What are you having?"

Question mark.

And the question mark is the most important part of the whole inquiry, because that's where the uncertainty -- and your freedom -- lies. But the planets do even more. They offer advice. In a sense, they recommend certain choices over others. They seem biased toward your evolution. They often suggest that you take the less familiar path, the one that moves you into richer fields of your own potentiality. The planets express this rather philosophical bias in a very concrete way. Typically, when you make a less energetic response to a planetary question, the results, while initially comfortable, rapidly turn painful. Sometimes the pain is immediate and dramatic, as in the collapse of an important relationship. Other times, it's more subtle, as in the degeneration of life into deadening boredom and ritual. Either way, sooner or later we know you made a wrong turn somewhere.

In the pages that follow, we will be exploring the coming months of your life from this planetary perspective. There are three parts to the report, and any or all of them may be included here, depending on which have been requested. First, the big questions. In the part of the report called THE INVITATION, we try to get that "mountain-top" perspective that enables us to make sense of the details. In THE MEANS, we turn our attention to some secondary factors that offer suggestions, help, and support in responding to those big questions. And finally, we'll look at the report period month-by-month, day-by-day, to get some ground-level insight into THE DETAILS. Your report may be for three, six, nine, or twelve months and may include any or all three sections just described. For this reason, and because some years in your life are astrologically more active than others, report length can vary quite a bit.

Throughout the following text, I'll be endeavoring to write in plain English, but if you're unfamiliar with the jargon of astrology, you'll encounter a few words that may require definition. A "transiting" planet, for example, refers to the actual, current position of that planet in the sky. Sometimes the transiting planets form critical geometric angles with the "natal" planets in the birthchart, triggering developmental questions in your life. These critical angles

are called "aspects."

The "progressed" planets function in much the same way as the transiting planets, but we approach them a little differently. They're like a script that's been built into your birthchart. Just as we know that an oak tree will emerge from an acorn and bring forth its leaves in season, similarly each person's birthchart contains within it the seeds of certain predictable developmental stages. Progressions spell out those stages.

So sit back, open your mind, and engage your heart. It's time to consider...

## The Invitation

Some years loom large in our memories decades down the road; others are blurry, easily forgotten. That universal human reality is reflected in the movements of the planets -- astrologically speaking, one year is often far more significant than another, just as in life. Most of the really important celestial factors move rather slowly; thus, it's not unusual to experience a time in which none of them have gone critical, when we can calmly keep on putting one foot after the other, on "cruise control."

Well, for you this is definitely not that kind of year. Something truly pivotal is occurring...

### **Pr. Sun enters Aries**

Date: Mar 15, 2013 - Continuing

Of all the changes the progressed Sun can make, arguably the most fundamental is the change from one sign to another. To say this marks the beginning of a new chapter in your life is too weak a statement -- a new "volume" of your life is a better metaphor. An entirely unprecedented set of motivations and needs are arising inside you. Much that used to satisfy you will now pall; new goals, aspirations, and experiences await you. We are all to some extent creatures of habit, and that is the problem you are now invited to recognize and solve. You are accustomed to thinking of yourself in certain ways, but many of those viewpoints, attitudes, and circumstances are no longer relevant to your journey. Can you hear the new inner voice? Can you turn a corner and release the hold of the past? These are the questions you face this year as you undertake this "mini-reincarnation."

The progressed Sun on Mar 15, 2013 leaves Pisces and enters Aries. The date is accurate, but a little misleading. Such a transition in fact unfolds over a period of two or three years. The old habits and patterns don't disappear magically one morning, nor do the new impulses immediately find mature expression. Recall that the progressed Sun takes thirty years to move through each sign -- those habits have had a long while to sink deeply into your self-image, and the new patterns must necessarily emerge slowly.

As we've seen, the progressed Sun is now leaving Pisces, which tells us that underlying your overt biography is a hidden evolutionary agenda. Consciously or unconsciously, the universe has been set up to teach you the lessons of Pisces. In fact, so many of the seemingly random factors of your life have been governed by this principle that you've grown adjusted to

it, thinking that life must simply always be that way. Now it's changing. Each sign is a reaction against the previous one, so these transitions tend to be dramatic. Let's consider where you've been, then have a look at where you're going. Pisces is the Rosetta stone for unlocking your past. Let's explore it.

Pisces represents release. Traditionally, it is the sign of the dreamer or the visionary. Those are evocative images, because to experience dreams and visions you must stop resisting, let go of control and all preconceptions, and allow a natural process to unfold. During a Piscean period, something is rising up from your psychic depths. You can't understand it and you can't force it. All you can do is avoid getting in the way. Often people use religious or metaphysical language to describe these Piscean developments in their lives. You may experience a sense of the presence of God, or find a renewal of faith. Extrasensory experiences are not uncommon during this phase: hunches, prophetic dreams, the locking of two minds. Perhaps you are drawn to meditation, or to spiritual philosophy. Oracles may attract you: astrology, tarot cards, runestones. Or you may be drawn to psychics or spiritual teachers. The key lies in realizing that, in Pisces, the seeds of a vision are planted in you. What forms in the core of your being now is not a clear, articulate idea regarding your future orientation; rather, it is a knot of emotion, of psychic energy -- an attitude. Cultivate it; this is the soil from which the rest of your life will spring.

Your spirit has been immersed in those lessons for so long it's hard for you to imagine yourself any other way. But a transformation is unfolding. There is a changing of the tide regarding these "Hand of God" factors in your life. The old lessons are now learned; new ones are arising. What is this fresh pattern? What are the new lessons, the new unifying factors, in the experiences that will shape the next three decades of your existence? As we have seen, the progressed Sun is now entering Aries.

Aries represents courage. It is the zodiac's first sign, and it illustrates some truly primal instincts. Survival, above all else...and survival in a world that is characterized by something of an "eat or be eaten" mentality. Thus, Aries lessons often concern existential swordsmanship -- the right and appropriate expression of anger, boundary-defending skills, ways of claiming our rights. When such energy is turned on in our lives by passing astrological forces, we tend to draw to ourselves patterns of circumstance which call for enormous outpourings of bravery. We encounter adversaries, competitors, enemies, and opponents. Often we face nerve-tingling adventures or crises. The peril is not fear, exactly...fear is a natural emotional response to real threats...but rather panic, which is a loss of Will, Intention, and Control in the face of fear. Always, the opportunity to learn courage is there -- and always, the opportunity to run away. Paradoxically, it is in that running away that we often experience the greatest pain... the "be eaten" side of our Arian equation. Not to trivialize it, but one can view an Arian episode as a course in assertiveness training, a sort of psycho-spiritual "basic training" which empowers you to seize other, more subtle experiences down the road.

### **Tr. Neptune is Square Moon**

In effect: Sep 17, 2012 - Jan 1, 2013

Peak Date(s): sometime after the report period.

The planet Neptune is presently tinting and shading your biography, adding its dreamlike

quality to the existential stew. Close your eyes; there's a world in there. That's Neptune, the planet of consciousness itself. Now open your eyes. There's a world out there too, and it's hard to ignore it. In fact, the outer world has become so pressing in its demands that you've partly lost contact with the inner one. But Neptune, transiting through sensitive territories for you now, is fixing that. Your inner world is so full it's brimming over, overflowing its banks into your daily life. If you resist the process, you'll find a host of Neptune problems plaguing you: losing the car keys, forgetting to pay the electric bill, having the attention span of a three-year-old on a sugar jag. But there's an alternative: trust the process. Slow down. Meditate. Let the images come. Mould opinions. Breathe in, breathe out. Why? Because your unconscious mind has a message for you. It has to do with the possibility of happiness for you over the next few years, about how old sources of joy are drying up and -- critically -- about new ones you must learn to recognize. How do you receive the message? You stop resisting. You simply let it in. That's Neptune in the broad sense. How is it effecting you specifically? Neptune is square your natal Moon: sometime after the report period..

Let's first understand that the action is in the First House, for that's where Neptune is currently located in your chart. And what does that tell you? That the circumstances driving your development, at least in terms of this particular configuration, have to do with the choices you make and how you present yourself. Be assertive; take responsibility. You have considerable power in this situation. To use it well, act in the spirit of Neptune, as we just described it. But what's the issue? What part of your own life is at stake? To answer that question, we turn our attention to the Moon, which is being invited into development during this new beginning in your life.

Astrology is the basic "programming language" of human consciousness. That may seem like a bold claim, but it's easily tested and proven. Pick someone who imagines he or she knows nothing at all about astrology. Ask them what the Moon means. After an initially dumbfounded look, you'll probably get an answer such as, "I dunno...feelings?" Which is quite correct. The mind naturally associates the Moon with darkness, with moonlight...and therefore with ghosts and romance, magic and tears, vulnerability and exhilaration: emotions. Deep inside us all is a subjective realm. Love and hate, joy and sorrow, dwell there. So do our daydreams and our creativity. If we could "average" a person's mood over a lifetime, we'd have an excellent profile of his or her Moon. When the Moon is triggered into development by a passing transit or progression, your inner life is stimulated. You feel stirred up. Powerful currents of emotional energy, for weal or woe, are released into your psyche. The very basis of happiness for you is evolving.

In what way do those notions connect with your present circumstances? Understand that the Moon occupies the Tenth House of your natal chart, an area which refers to issues of career, status, and your public role...concerns which are currently undergoing considerable developmental pressure and change. All positive steps in terms of profession or your place in the community hold one point in common: they move you further and further in the direction of the Moon, as we just described it. Any work that will prove enduringly satisfying invokes the considerable energies of the Moon in you; any work that does not embody them will turn out to be transitory or deadening.

The aspect connected with the astrological process we're investigating here is the square, as

we have seen. The square, traditionally characterized as an unfortunate aspect, describes a geometric angle of 90 degrees between the natal planet and the moving trigger. To call squares "bad" is misleading. More accurately, they are compelling. In the area of your life we're considering, a terrific friction has arisen. It's not comfortable, but it is an extremely effective motivator. The trick in using the energy creatively lies in moving decisively -- determining precisely what you want, claiming it, and letting the rest go. A season of tough choices is upon you. Regarding the process we described in the previous paragraphs, there are costs involved in all the courses available to you...the most costly, for all concerned, being the course of indecision.

### **Tr. Saturn is Square Ascendant**

In effect: Sep 28, 2012 - Oct 15, 2012

Peak Date(s): Oct 7, 2012

The planet Saturn is currently casting a gray light on your circumstances -- but is it the bleak gray of sorrow or the clear, comforting gray of wisdom and digested experience? That's the choice. Saturn is classically viewed as the "bad" planet, the "Greater Malefic." Don't believe it! Used correctly, its transits can bring dignity and self-respect. Essentially, Saturn is about maturity. The part of your life that's being touched by the Saturnian energies needs to grow up...which, despite the lies we're all told, is not a process one mysteriously completes on one's twenty-first birthday. There is an area of your life where you have simply outgrown yourself, at least inwardly. The task now is to adjust your outward circumstances to reflect the maturity you've already attained psychically and invisibly. It is a material problem, not fundamentally a psychological one. To succeed, there is first a need to face reality squarely, even if it's unsavory. Then to make a hard choice...that is, to reach an emotional bottom line and not be crippled by your awareness of the ambiguities in your situation. And finally, in a spirit of commitment, persistence, and self-discipline, to claim those circumstances in your life which reflect the hard inner work you've been doing over the last few years. That's Saturn in general. Specifically, Saturn is square your natal Ascendant: Oct 7, 2012.

Let's begin deciphering this configuration with the understanding that the action driving these existential developments is showing up in the part of your life we call the Ninth House. That's where Saturn is currently making its influence felt, thus bringing events to bear upon you. Typically, when the "House of Long Journeys" is stimulated, life is eventful and expansive in tone. You are challenged to stretch out toward new experiential horizons through travel and educational efforts -- to toss hand grenades into the well-oiled machinery of your life. Why? Because deep down inside, you are starting to get bored with yourself! The key question with which you must wrestle is this: which adventure is the right one? Astrology cannot answer precisely, but here's one helpful hint -- to travel the right new road and thus refresh your spirit, you will need every ounce of the energy of Saturn that you can muster. It's that kind of adventure, that kind of stretching, that is appropriate for you now. But what's the core issue? What part of your own life is at stake? To answer that, we turn our attention to the Ascendant, which is being invited into development by the invigorating, exhilarating impact of these new perceptions.

Like the rest of us, you are a complicated, paradoxical individual, full of contradictions and undercurrents. That's human. But another part of being human is that, like the rest of us, you

need to get out of bed in the morning and put on a streamlined, simplified social mask that allows you to function in the social beehive. There's no way that you can have a truly intimate relationship with every face you see in your daily life, nor would you likely want such connections. So we all keep much of what we really are behind our astrological Ascendant, which symbolizes that mask. Physically, it is simply the sign that was dawning in the east at the instant of your birth...and symbolically it represents how you "dawn" on people who don't know you very well. When triggered by a passing transit or progression, the Ascendant signals the need to make some adjustments in the way you present yourself in the social world, so that your outer appearance remains reasonably aligned with who you have become inwardly. The work is superficial; which is not to say unimportant. Often it has to do with changing how you hold your body, the way you speak, and the clothes you wear.

The two factors, as we mentioned, are linked by a square -- traditionally seen as a "bad" aspect, but more accurately seen as simply frictional. Squares generally suggest tough choices, external pressures, and at least some stress.

What we've considered above is the underpinning of this phase of your life. It's truly elemental material -- the stuff of which milestones are made. There's no guarantee that astrological forces of such magnitude will be activated for everyone all the time. What follows is an analysis of some slightly less portentous dimensions of your astrological picture...less portentous, but still powerful enough to qualify as part of this year's "Invitation."

Try to see what follows in the light of all that's gone before...

### **Tr. Pluto is Square Venus**

In effect: Jun 18, 2012 - Dec 8, 2012

Peak Date(s): Jul 30, 2012; Nov 4, 2012

The planet Pluto is shading the spirit of your life nowadays, and in a nutshell that means that you are being challenged to heal. Pluto, as you probably know, is the lord of the underworld...or to put it more succinctly, the God of Hell. And it is disquieting, to say the least, to imagine that this deity is currently dining at your table. But take heart! The "hell" inside you needs airing out, and that is essentially what this transit is about. You've been hurt. You've been used, abused, rejected, exploited, lied to...the whole sad litany. And, like the rest of us, you've sometimes had to keep the proverbial stiff upper lip and simply get on with your life. But where does all that hurt go? Down deep into the unconscious mind, where it stays until you're clear enough and strong enough to handle resurrecting it and really going beyond it. Pluto's action is to bring up buried emotions. Its tone is intense. It often feels moody and confrontative. It can destabilize and disrupt the areas of your life that it's touching. The best course is to resolve to go deeper and deeper, truth above kindness and resolution over comfort. It's not easy, but in the end the energizing and empowering of the psyche make the process worthwhile. What is Pluto actually doing? Currently it is square your natal Venus. Although Pluto is a slow-moving planet and usually unfolds its story over a period of two or three years, during the period of this report the action peaks Jul 30, 2012; Nov 4, 2012.

Currently Pluto is maneuvering through your Twelfth House, which is the last house of the cycle and often suggests endings and dissolutions. Your key to success here lies in sorting out



what parts of your life and circumstances have truly run their course and are therefore ready to be released. That's hard, sometimes, since like the rest of us you're in part a creature of habit and are therefore subject to getting too attached to the familiar. Of what should you be letting go? Part of the answer lies with Pluto, as we just described it: the part of you that's ready to "die and be reborn" is tangled up with that kind of energy and attitude. But we can go further. There is also some ending and releasing going in connection with Venus, which is being invited into development by these essential and apt conclusions -- some of which, by the way, may be forced upon you by outside events if you're slow to recognize their necessity.

Venus is the goddess of love, of peace, and of the arts. In each domain, balance is the ideal. Deep in your psyche, there is a place that seeks the comfort of balance and equilibrium, whether through shared fondness with another human being, an hour's peace in the garden, or the rapture that sometimes arises as we immerse our hearts and minds in something beautiful. That inner circuit is your natal Venus. When it is stimulated, we often see experiences arising which prophesy a change in your relationships, in what gives you serenity, or in your aesthetic experiences.

Bolstering the energies of Venus, never a bad idea, is particularly essential now, for Venus lies in your Eighth House, the traditional "House of Death." Mortality itself is usually not the issue; more accurately, the question here lies with all the fears with which you live and all the hurts and distortions the past has visited upon you. All of us sit on emotional volcanos. You, too. Now the time has come to look more closely at some uncomfortable memories...perhaps to share them with someone you trust implicitly. Take the spirit and attitude of Venus, as we just described it. That mood will carry you most deeply and efficiently into the unsettling material at hand.

When Venus gets hooked up with Pluto, the progress of love (Venus) depends utterly upon the profundity of your psychological understanding (Pluto). A season of secrets revealed is upon you, and not all of them are pleasant. At a time such as this, your optimal path lies in the direction of facing squarely the lacerations and abrasions of your own personal history and those of one about whom you care very much. Most challengingly, you need to make a mammoth effort to keep the two clearly separated.

The two factors, as we mentioned, are linked by a square -- traditionally seen as a "bad" aspect, but more accurately seen as simply frictional. Squares generally suggest tough choices, external pressures, and at least some stress.

### **Pr. Moon aligns with the Fifth House cusp**

Date: Jun 20, 2012 - Continuing

You don't need to be an astrologer to know what the Moon means. Just engage your imagination. Immediately, the mind free-associates. Moon: night...feelings...falling in love...seeing a ghost... And that's pretty much what astrologers throughout history have said: the Moon represents your interior life, your "heart." Like all astrological factors, the Moon progresses, taking a little over a quarter of a century to make one circuit around the chart. It typically spends a couple of years in each sign or house, and eventually forms aspects with all the planets. How do we read it? Simple: at any given moment the progressed Moon tells us

where your heart is. Or, to be a little less schmaltzy about it, the Moon says where your attention is. What is concerning you. Where your growth experiences are unfolding -- which is often to say where you're experiencing challenges, upsets, or opportunities to regroup and express yourself in new ways. Being an emotional factor, the progressed Moon always refers to areas of heightened sensitivity. Intuition comes to the forefront. Instincts must be followed. Somehow the unconscious mind has gotten ahead of conscious awareness, and now conscious awareness is catching up, following the trail of intuitive clues and impulses laid down by the wise, dark interior of your spirit.

How is the progressed Moon currently impacting on you? It aligns with the Fifth: Jun 20, 2012.

Play -- that's the essence of the Fifth House. Traditionally called the "House of Children," it sometimes does bring kids into your life in significant ways. But ultimately what's at stake here is the well-being of your own inner child. And with the Moon now entering your Fifth House, you need to loosen inhibitions: relax, indulge yourself, enjoy your "playmates."

All that may sound appealing, but rather lightweight. Don't be misled! Something extraordinarily portentous is occurring. Think of children at play: they almost always enact adult roles...astronauts, warriors, adventurers, parents. It's tough to escape the conclusion that play is a kind of neurological rehearsal for adulthood -- the clincher being our certainty that any child who chronically refuses to play is headed for psychiatric problems in adulthood.

Something new has crystallized in your deep psyche...a new Self, or more specifically, a new aspect of yourself, one that has the nature of a more mature expression of the Moon. But you probably don't have a clue about how to turn it into anything visible and real! In exactly the same way, deep in the psyche of every child is an impression of adulthood, but almost no true understanding of adult realities. Kids manage to solve that problem, and so can you -- in precisely the same way. Get loose. Enact your imagination. Buy toys for yourself: a boat, a new car, watercolors, an extravagant trip. Go with your impulses. Connect with interesting strangers. In the spirit of the Moon, do what pleases you. It's serious business, but here's the delightful paradox: if you take it too seriously, you'll blunder.

### **Tr. Uranus is Opposite Venus**

In effect: in progress - Mar 29, 2013

Peak Date(s): Sep 3, 2012; Mar 11, 2013

The planet Uranus is presently stirring the pot of your life, and that always promises a tumultuous passage, peppered with unexpected developments and encounters. Outwardly, Uranus is the wild card, bringing unpredictable and unforeseen events into the picture. Inwardly, it signals a time of accelerated individuation...that is, a time in which who you really are and what you truly want are rapidly emerging and defining themselves. A portion of what you imagined to be your identity has, in fact, little to do with you; it is a side-effect of your social training, nothing more. And, like training wheels on a kid's bike, you are now ready to dump it. This has an unsettling effect upon not only yourself, but also those around you. Often during Uranian periods there is a distinct "changing of the guard" in our social circles; old relationships end, new ones appear. Claim your right to be yourself -- that's the essence of the transiting Uranus. Whatever it touches, changes. Trust the changes! Like a hard wind blowing

the sand off a buried city, they are revealing who you actually have been all along. That's Uranus in general. Specifically, Uranus is opposite your natal Venus: Sep 3, 2012; Mar 11, 2013.

Let's first understand that the action is in the Second House, for that's where Uranus is currently passing through your chart. And what does that signify? That the circumstances driving your development, at least in terms of this particular configuration, have to do with self-confidence...but not simply in the conventional psychological way. Here the self-confidence -- or lack of it -- is rooted in the quality and appropriateness of your resource-base. To use this time well, act in the spirit of Uranus, as we just described it, and claim what you need for your journey, whether this be money, connections, equipment, or skills. But what's the deeper issue? What part of your own life now hinges on your gathering the right tools, funds, and skills? To answer that, we turn our attention to Venus, which is being invited into development by this quickening of your dignity, self-reliance, and aplomb.

The natal Venus -- that, as we have seen, is where you store your romantic and affiliative sensibilities, along with your aesthetic tastes.

Your Eighth House engaged us previously in the report. Now we see it provoked again, indicating that your attitude toward the circumstances we're considering reflects a fundamental distortion. It has to do with your own psychological scar-tissue, and it biases your thinking in the direction of Venus, as we just described it. Follow your moods down into the labyrinths of your psyche; pay attention to your dreams, your fantasies, and your unspoken hungers. And speak nakedly and truly with someone of the nature of Venus, who will help you clarify your own real needs.

When Venusian energies unite with Uranian ones, the unexpected (Uranus) makes itself felt in the intimate sphere (Venus). Improbable encounters occur. Warp-speed evolutions unfold in love, friendship, and working relationships. Behind the fireworks, what is happening is that you are rapidly disentangling your real essence from your polite, conventional, socially-programmed "personality." When that happens, inevitably all interpersonal contracts come up for review.

The geometric angle or "aspect" involved in the process we are studying is, as we said, the opposition. Not surprisingly, this suggests that the natal planet and the moving one are 180 degrees apart. Tension is thus woven into the spirit of this period of your life. The two forces we described are polarized, which often translates emotionally into a feeling of being damned if you do, and damned if you don't. How can you break the logjam? Recognize that any impossibilities you are experiencing in this area probably arise from an incomplete or biased perspective. The opposition aspect always calls for a leap into a new, more accepting level of consciousness. Something is missing in your view of the problem -- and that missing link (here's the corker...) lies in the wisdom embodied by those people or situations that are now antagonizing you. It's not that they're right and you're wrong; only that the truth that can carry you beyond this impasse lies somewhere between the two positions.

### **Pr. Venus is Square Neptune**

In effect: in progress - Jul 28, 2012

Peak Date(s): sometime before the report period.

"Love." What a word. Eskimos, it is said, distinguish two hundred different kinds of snow, each with its own name. Perhaps we should take a cue from them and cash in our word "love," replacing it with dozens of more specific concepts. It would still baffle us, inspire us, give us sleepless nights -- but at least we might then be able to communicate with each other more clearly. The love an infant feels for his or her mother...the consuming, volatile love of our teen years...the affection between old friends...the quiet affinity between those who have been well-married for decades: why do we put them all under the dominion of the same syllable? They're certainly different human experiences. Love evolves. Our capacity to feel that emotion takes on new resonances as we mature, and it drops old resonances.

Astrologers measure that evolution through the motions of the Progressed Venus. When it comes to a sensitive zone in your birthchart, you are invited to open yourself to new dimensions of human relationships. Typically, the passage of progressed Venus over a critical point coincides with visible alterations in our sphere of intimacy: friendships, business or creative partnerships, romantic bonds...all come to crossroads. Sometimes they come to endings. Other times they slough off deadening rituals and experience renewal, even renaissance. Many times such Venusian events mark the arrival of new people in our lives, people whose destinies are entwined with our own. Always, though, behind the outward relationship events, there is a deeper layer of meaning in these progressions: you are now asked to deepen the way you love, to love with yet another dimension of your being, to call still another part of your soul into the service of love. And, as always, it's possible to miss the point, squandering the Venusian force in wheel-spinning romances or soap-opera related interpersonal dramas.

Let's first understand that the action is in the First House, for that's where Venus is currently located in your chart. And what does that tell you? That the circumstances driving your development, at least in terms of this particular configuration, have to do with the choices you make and how you present yourself. Be assertive; take responsibility. You have considerable power in this situation. To use it well, act in the spirit of Venus, as we just described it. But what's the issue? What part of your own life is at stake? To answer that question, we turn our attention to Neptune, which is being invited into development during this new beginning in your life.

How is the progressed Venus currently touching you? It is square your natal Neptune: sometime before the report period.. In thinking about this, remember that progressions are slow-moving events and that the action simply peaks then; it will be in effect throughout the period of this report.

Close your eyes. Don't think of anything at all. Just be aware of all that infinite, dark space. Welcome to Neptune. In your natal chart, it represents the part of you that knows how to enter trance, to meditate, or to "space out." Everybody's got one, and everybody experiences that part of their consciousness from time to time. When triggered by transits or progressions, Neptune asks you to let go, to allow material to enter your mind uncensored and unstructured. It's more akin to feeling than thinking, but neither word captures it perfectly. Dreaming is the closest analogy...a sort of free-associative state in which your own mind works like an unpredictable

movie theater. Why bother? Because such an astrological event signals that your unconscious mind or, if you prefer, your soul has an important message and is trying to get in touch with you.

Maintaining a healthy relationship with the force of Neptune is particularly central to your well-being in one key area: the Fourth House, which is where Neptune happened to be located when you took your first breath in Sun Prairie, WI. There, in the domain of home and hearth and also of emotional and psychological processes, a strong response to this planet forges in you a clear sense of who you are and what you want. Happiness has different sources for different people. For you, much of it comes from experiences connected to Neptune, as we just portrayed it. Claim them! Always sound advice -- but how you go about claiming them is currently evolving, partly as a result of changing external circumstances.

When Venus mixes with Neptune, a tender, vulnerable time is upon you. You feel heightened sensitivity, and often a need to experience a sense of spiritual connectedness. The peril here is that you might mistake hormones for previous lifetimes together, or unprocessed psychological scars for God's will that you fall in love with X, Y, or Z. At its darkest, this event can mean self-deception and heartbreak; at its best, it might teach you about heights of love you've never before known, or perhaps a lesson or two in sacred sexuality.

The two factors, as we mentioned, are linked by a square -- traditionally seen as a "bad" aspect, but more accurately seen as simply frictional. Squares generally suggest tough choices, external pressures, and at least some stress.

### **Tr. Jupiter aligns with the Fifth House cusp**

Date: Aug 20, 2012; Nov 18, 2012; Apr 8, 2013 - Continuing

The planet Jupiter is currently coloring your circumstances. Before we say exactly how, let's attempt to understand the more general significance of any Jupiter event. Essentially, this is a call to recognize an opportunity. Traditional astrologers view it more starkly -- to them, it is simply the planet of luck. And that is often the case: the toast does tend to land butter-side up when Jupiter is crossing sensitive territories. But the real, evolutionary meaning lies deeper. One key is that Jupiter is future-oriented...it is concerned with bright, unexplored possibilities. Stripped to its bones, Jupiter always asks one primary question: how have you been underestimating yourself? Its transits signal a time when new opportunities come into existence, but to seize them you must recognize that you deserve them, that you are capable of rising to them, and that old deals and compromises are finished. Trust yourself, have faith in life, and go for it: that's the spirit of Jupiter. How is it affecting you? Jupiter is conjunct your natal Fifth House cusp: Aug 20, 2012; Nov 18, 2012; Apr 8, 2013.

Play -- that's the essence of the Fifth House. Traditionally called the "House of Children," it sometimes does bring kids into your life in significant ways. But ultimately what's at stake here is the well-being of your own inner child. And with Jupiter now entering your Fifth House, you need to loosen inhibitions: relax, indulge yourself, enjoy your "playmates."

All that may sound appealing, but rather lightweight. Don't be misled! Something extraordinarily portentous is occurring. Think of children at play: they almost always enact adult roles...astronauts, warriors, adventurers, parents. It's tough to escape the conclusion that

play is a kind of neurological rehearsal for adulthood -- the clincher being our certainty that any child who chronically refuses to play is headed for psychiatric problems in adulthood.

Something new has crystallized in your deep psyche...a new Self, or more specifically, a new aspect of yourself, one that has the nature of a more mature expression of Jupiter. But you probably don't have a clue about how to turn it into anything visible and real! In exactly the same way, deep in the psyche of every child is an impression of adulthood, but almost no true understanding of adult realities. Kids manage to solve that problem, and so can you -- in precisely the same way. Get loose. Enact your imagination. Buy toys for yourself: a boat, a new car, watercolors, an extravagant trip. Go with your impulses. Connect with interesting strangers. In the spirit of Jupiter, do what pleases you. It's serious business, but here's the delightful paradox: if you take it too seriously, you'll blunder.

### **Pr. Venus enters Pisces**

Date: Sep 20, 2012 - Continuing

We met the progressed Venus earlier in the report. As you may remember, this represents your evolving capacity to love and to connect. Its arrival at a sensitive zone generally heralds the arrival in your life of people who will prove pivotal to you, one way or another. Inwardly, it has to do with realizations, evolutions, and maturation in your own attitudes toward intimacy.

What is so important about your progressed Venus right now? It enters the sign Pisces: Sep 20, 2012. Since a planet typically takes decades to progress through a sign, the implications of this change will be long-lived. What are they? Start by saying that almost everything pertinent to intimacy in your life will be operating according to a new agenda. Let's investigate it.

Pisces -- we explored this sign earlier in the report. To review, its symbolism revolves around letting go and allowing inspiration to rise up from the psychic depths. Under a Piscean stimulus, you enter a kind of "dream-time" as the seeds of a new cycle of experience in your life come into focus. The best way to help the process along is to create space for it to happen. Take time off in peaceful places, meditate, sit in the garden. Always remember that it has more to do with allowing than with forcing.

### **Pr. Venus is Square Moon**

In effect: in progress - continuing

Peak Date(s): Oct 21, 2012

We met the progressed Venus earlier in the report. As you may remember, this represents your evolving capacity to love and to connect. Its arrival at a sensitive zone generally heralds the arrival in your life of people who will prove pivotal to you, one way or another. Inwardly, it has to do with realizations, evolutions, and maturation in your own attitudes toward intimacy.

Let's first understand that the action is in the First House, for that's where Venus is currently located in your chart. We've met this house before. As you may remember, it has to do with the assertive choices you make and the confidence with which you present yourself. Something is now occurring in which your own action -- or inaction -- is the pivotal variable. But what's the

point? What are the real questions? The answer lies with the Moon, which is being invited into development during this new beginning in your life.

How is the progressed Venus currently touching you? It is square your natal Moon: Oct 21, 2012. In thinking about this, remember that progressions are slow-moving events and that the action simply peaks then; it will be in effect throughout the period of this report.

Astrology is the basic "programming language" of human consciousness. That may seem like a bold claim, but it's easily tested and proven. Pick someone who imagines he or she knows nothing at all about astrology. Ask them what the Moon means. After an initially dumbfounded look, you'll probably get an answer such as, "I dunno...feelings?" Which is quite correct. The mind naturally associates the Moon with darkness, with moonlight...and therefore with ghosts and romance, magic and tears, vulnerability and exhilaration: emotions. Deep inside us all is a subjective realm. Love and hate, joy and sorrow, dwell there. So do our daydreams and our creativity. If we could "average" a person's mood over a lifetime, we'd have an excellent profile of his or her Moon. When the Moon is triggered into development by a passing transit or progression, your inner life is stimulated. You feel stirred up. Powerful currents of emotional energy, for weal or woe, are released into your psyche. The very basis of happiness for you is evolving.

Your Tenth House came up earlier; now we see it in the spotlight again, once more informing us that the deepest, most essential factors in the situation we're considering all revolve around your role in the world -- your profession or job, your political (or metapolitical!) activities...in general, the image that strangers have of you. And what do right choices look like here? A large part of the answer lies with the Moon, a planet we described above, whose basic nature and values underlie what we might call your "Cosmic Job Description."

When the Moon blends with Venus, a mood (Moon) of affection and fondness (Venus) often fills the psyche. Creative or aesthetic concerns come to the fore; social and perhaps romantic activities intensify. The heart hungers for connection, closeness, and the sharing of tender support. Relax a little. Take time with people about whom you care. And don't let this period pass without enjoying a slow, unfolding sunset.

The two factors, as we mentioned, are linked by a square -- traditionally seen as a "bad" aspect, but more accurately seen as simply frictional. Squares generally suggest tough choices, external pressures, and at least some stress.

### **Tr. Saturn is Square Saturn**

In effect: Nov 20, 2012 - Dec 9, 2012

Peak Date(s): Nov 29, 2012; May 21, 2013

Saturn played a role earlier in this account. Now it emerges again, in a new way. To refresh your memory, Saturn is ultimately the planet of maturity. It always places a strong emphasis upon hard work, decisive choices, and persistence. Saturn currently is square your natal Saturn. The energies crest Nov 29, 2012; May 21, 2013.

Let's begin deciphering this configuration by recognizing that the action driving these existential developments is showing up in the part of your life we call the Ninth House, which we encountered earlier in the report, for that is where Saturn is currently making its influence felt. This suggests that events and opportunities involving travel, education, and a general expanding of your horizons are now occurring, and that you could definitely use the breath of fresh air they'll create if you go ahead and, in the spirit of Saturn, take the leap of faith for which they're calling. But what's being triggered inside you? What part of you will benefit most deeply from such exploration and expansion? The answer lies with Saturn, which is being invited into development during this time of questing adventure.

Getting kicked out of the nest, one way or another, is an elemental part of life. Faced with the stark, unyielding actualities of the "real world," you either die then and there or get on with the cunning, calculating business of staying alive. To accomplish either of those ends, you activate the energies of your natal Saturn: your self-discipline, your patience, and your practicality...if you choose survival. And if you choose to give up, you withdraw into fear and probably get into a mood of despair and defeat. When Saturn is triggered by passing transits or progressions, it signals a time in which hard work is appropriate, necessary, and the best insurance for happiness. Often it suggests that the circumstances or even people who have been a significant part of your past must now be left behind, making way for a more mature expression of your identity.

Maintaining a healthy flow of the energies of Saturn, always good for you, is especially crucial to your closest human relationships: marriage, profound friendship, long-term sexual bonds. Why? Because in Sun Prairie, WI at the moment of your birth Saturn occupied your Seventh House, the traditional "House of Marriage." Two lines of reasoning emerge here. The first is that by bringing the flavor of Saturn into your intimate bonds, you shape love in a lasting, more meaningful way for yourself. The second is that your natural partners are themselves people with the spirit of Saturn. Relating deeply to those whose natures are too far removed from that tone and style is simply not your path. However we look at your situation, intimate connections are clearly a front-burner issue right now.

When Saturn interacts with its own natal position, as we observe here, commitment is the highest path, and the one which brings the most joy in the long run. At some level, a vow is called for now...at least a vow to yourself. It will take effort, and the effort will be costly and exhausting. But it will be worth it. We hear so much about "being in touch with the inner child." Good advice, but not now. Saturn is about being in touch with the inner adult, which is to say, being in touch with determination, patience, and your own core moral values.

The two factors, as we mentioned, are linked by a square -- traditionally seen as a "bad" aspect, but more accurately seen as simply frictional. Squares generally suggest tough choices, external pressures, and at least some stress.

### **Pr. Sun is Sextile Neptune**

In effect: in progress - Jan 8, 2013

Peak Date(s): sometime before the report period.

We met the progressed Sun earlier. As you may recall, this is the most basic symbol in



astrology. It represents your evolving self...that deep, changing core of self-imagery, values, and needs that underlies all the decisions you make and most of the experiences you have. The progressed Sun has already figured in this report, but it's active in another way as well -- and having the all-important progressed Sun figure more than once during a single year immediately suggests that you've reached a major milestone in your life. It is sextile your natal Neptune: sometime before the report period.; at least, that's when the action peaks, although the progression will be in effect throughout the time period we're discussing in these pages.

Let's first understand that the action is in the Second House, for that's where the Sun is currently passing through your chart. And what does that signify? That the circumstances driving your development, at least in terms of this particular configuration, have to do with self-confidence...but not simply in the conventional psychological way. Here the self-confidence -- or lack of it -- is rooted in the quality and appropriateness of your resource-base. To use this time well, act in the spirit of the Sun, as we just described it, and claim what you need for your journey, whether this be money, connections, equipment, or skills. But what's the deeper issue? What part of your own life now hinges on your gathering the right tools, funds, and skills? To answer that, we turn our attention to Neptune, which is being invited into development by this quickening of your dignity, self-reliance, and aplomb.

The natal Neptune -- that, as we have seen, symbolizes pure consciousness. It is the mystical planet, the part of your being that receives inspiration and, depending on your metaphysical tastes, either inner guidance or divine direction.

Your Fourth House figured previously in this report. Now we see it triggered again -- a clue that in your present circumstances, one of the most active factors is the need for a radical clarification, in your own mind, of your personal needs and wishes. There is something inside you, something of the nature of Neptune, to which you must be true if you are to be happy. And it is now under accelerating developmental pressure. Some of this process may even involve some re-definition of your role in your family, broadly defined.

When the Sun interacts with Neptune, your solar ego grows fuzzy, out of focus. And that is fine and natural, because under Neptune's influence a new inspiration is coming up from the deep, creative unconscious and seeping into your conscious mind. What should you do? In a nutshell: nothing. Do "nothing" exactly like the cat is doing "nothing" outside the mouse hole. An attitude of alert waiting is appropriate now. Watch for signs and omens; they abound. Pay attention to your dreams. And if you've forgotten where you put the car keys, which is typical under this kind of energy, don't worry...it will pass. The trick lies in remembering that this is a time of realization, not of action.

The aspect pervading the event we've just considered is, as we observed, a sextile. Technically, that refers to a geometric angle of 60 degrees between the natal planet and the moving one. Sextiles are traditionally viewed as "good" aspects. Certainly, they're exciting. There is a mood of eagerness regarding the process we're exploring here -- and that's glorious, provided you're wary of the excessive impulsiveness that sextiles sometimes breed. In any case, the spinning wheel of circumstances can be counted on to provide some fortuitous, unexpected opportunities for you during this period. You'll have to be quick to seize them, though. They're real, but they're short-lived.

Tr. Neptune is Square Pluto

In effect: Mar 3, 2013 - May 14, 2013

Peak Date(s): Apr 1, 2013

Neptune played a part earlier in this report, but it has another trick or two up its sleeve. You may remember that this planet refers to letting down barriers and allowing the creative unconscious to speak. When handled well, it triggers a "seed time" in which new inspirations arise. If handled poorly, one tends to go off half-cocked while enamored of unrealistic ideas. So sit tight, enter trance, pay attention to your dreams and, if you're so inclined, pray or meditate. Neptune currently is square your natal Pluto. The inner opening process peaks Apr 1, 2013.

Let's first understand that the action is in the First House, for that's where Neptune is currently located in your chart. We've met this house before. As you may remember, it has to do with the assertive choices you make and the confidence with which you present yourself. Something is now occurring in which your own action -- or inaction -- is the pivotal variable. But what's the point? What are the real questions? The answer lies with Pluto, which is being invited into development during this new beginning in your life.

Everyone has fears. Everyone has shames and wounded places. In you and me and everyone else, there are marks left by the times we've been lied to, abandoned, used, or exploited. It's not the world's cheeriest subject, but turning away only empowers those Plutonian hurts, gives them more latitude to influence your life. When your natal Pluto is triggered by a passing transit or progression, dark shadows are stirred within you. It's a signal that forgotten, unprocessed, or repressed elements of your personal history are asking to be investigated. The procedure requires intensity, honesty, and emotional courage. The results are worth the effort. If you work well with these energies, you emerge stronger, clearer, and often with renewed inspiration. If you hesitate, it's not unusual for the old wounding dramas to be re-enacted in your life.

Your Fourth House figured previously in this report. Now we see it triggered again -- a clue that in your present circumstances, one of the most active factors is the need for a radical clarification, in your own mind, of your personal needs and wishes. There is something inside you, something of the nature of Pluto, to which you must be true if you are to be happy. And it is now under accelerating developmental pressure. Some of this process may even involve some re-definition of your role in your family, broadly defined.

When wide-open Neptune merges with the piercing perspectives of Pluto, you enter a long period of philosophical rumination. That may sound rather pale, but in fact the nature of your belief-system is probably the greatest single determinant of the shape of your life. And yours is up for review. The aim lies in establishing a balance between hard psychological honesty on one hand and the human need for inspiration and faith on the other.

The two factors, as we mentioned, are linked by a square -- traditionally seen as a "bad" aspect, but more accurately seen as simply frictional. Squares generally suggest tough choices, external pressures, and at least some stress.

**Pr. Sun is Trine Moon**

In effect: in progress - continuing

Peak Date(s): Apr 22, 2013

We met the progressed Sun earlier. As you may recall, this is the most basic symbol in astrology. It represents your evolving self...that deep, changing core of self-imagery, values, and needs that underlies all the decisions you make and most of the experiences you have. The progressed Sun has already figured in this report, but it's active in another way as well -- and having the all-important progressed Sun figure more than once during a single year immediately suggests that you've reached a major milestone in your life. It is trine your natal Moon: Apr 22, 2013; at least, that's when the action peaks, although the progression will be in effect throughout the time period we're discussing in these pages.

Let's first understand that the action is in the Second House, for that's where the Sun is currently located in your chart. We've met this house before. As you may recall, it has to do with self-confidence, especially when that confidence is rooted in your personal resources -- and that means more than just money. The time has come to act in the spirit of the Sun, as we just described it, and to claim the skills and material you need. But what's the point? What are the real questions? The answer lies with the Moon, which is being invited into development during this time of solidification and consolidation in your life.

Astrology is the basic "programming language" of human consciousness. That may seem like a bold claim, but it's easily tested and proven. Pick someone who imagines he or she knows nothing at all about astrology. Ask them what the Moon means. After an initially dumbfounded look, you'll probably get an answer such as, "I dunno...feelings?" Which is quite correct. The mind naturally associates the Moon with darkness, with moonlight...and therefore with ghosts and romance, magic and tears, vulnerability and exhilaration: emotions. Deep inside us all is a subjective realm. Love and hate, joy and sorrow, dwell there. So do our daydreams and our creativity. If we could "average" a person's mood over a lifetime, we'd have an excellent profile of his or her Moon. When the Moon is triggered into development by a passing transit or progression, your inner life is stimulated. You feel stirred up. Powerful currents of emotional energy, for weal or woe, are released into your psyche. The very basis of happiness for you is evolving.

Your Tenth House came up earlier; now we see it in the spotlight again, once more informing us that the deepest, most essential factors in the situation we're considering all revolve around your role in the world -- your profession or job, your political (or metapolitical!) activities...in general, the image that strangers have of you. And what do right choices look like here? A large part of the answer lies with the Moon, a planet we described above, whose basic nature and values underlie what we might call your "Cosmic Job Description."

When the Sun interacts with the Moon, your "head" and your "heart" are experiencing some complications in their relationship. The key to a peaceful resolution of the issue lies in each being heard and each being willing to bend a little. Your lunar need for self-nurture must be balanced with your solar responsibilities and sense of destiny. Your hardheaded reasonableness must be open to the "trans-rational" side of life, where happiness really lies. Compromise and balance are the essence of such an event.

As we said, the aspect involved in the event we just described is the trine, which refers to a

120 degree angle between the natal planet and the moving one. Trines are traditionally viewed as positive aspects, and in fact they generally do correlate with opportunities. Additionally, their existence implies that support is available to you, if you are willing to move to claim it. And therein lies the rub with the so-called "good" aspects. They're not very dynamic. Just as pain is a more powerful motivator than contentment, the trick with trines lies in taking advantage of them before the wheel turns and their potential vanishes. With regard to the developments we described in the previous few paragraphs: a door is now open, a red carpet rolled out...but don't count on everything remaining that way forever.

### **Tr. Neptune aligns with the Second House cusp**

Date: May 3, 2013 - Continuing

Neptune played a part earlier in this report, but it has another trick or two up its sleeve. You may remember that this planet refers to letting down barriers and allowing the creative unconscious to speak. When handled well, it triggers a "seed time" in which new inspirations arise. If handled poorly, one tends to go off half-cocked while enamored of unrealistic ideas. So sit tight, enter trance, pay attention to your dreams and, if you're so inclined, pray or meditate. Neptune currently is conjunct your natal Second House cusp. The inner opening process peaks May 3, 2013.

The Second House -- you may recall we encountered it earlier in the report. Again we see it stimulated, this time through the entry of Neptune into it. A quick reminder: originally the "House of Money," the Second House embraces the whole question of your resources at every level and reflects the attitude of confidence, or lack of it, that flows from your assessment of how well-equipped you are to face the challenges on your path. You need some new tools now, and they have the nature of Neptune.

### **Pr. Sun is Sextile Ascendant**

In effect: in progress - continuing

Peak Date(s): May 15, 2013

We met the progressed Sun earlier. As you may recall, this is the most basic symbol in astrology. It represents your evolving self...that deep, changing core of self-imagery, values, and needs that underlies all the decisions you make and most of the experiences you have. The progressed Sun has already figured in this report, but it's active in another way as well -- and having the all-important progressed Sun figure more than once during a single year immediately suggests that you've reached a major milestone in your life. It is sextile your natal Ascendant: May 15, 2013; at least, that's when the action peaks, although the progression will be in effect throughout the time period we're discussing in these pages.

Let's first understand that the action is in the Second House, for that's where the Sun is currently located in your chart. We've met this house before. As you may recall, it has to do with self-confidence, especially when that confidence is rooted in your personal resources -- and that means more than just money. The time has come to act in the spirit of the Sun, as we just described it, and to claim the skills and material you need. But what's the point? What are the real questions? The answer lies with the Ascendant, which is being invited into development during this time of solidification and consolidation in your life.

The natal Ascendant -- that, as we have seen, represents your style, how you go about translating your inner worlds into the two-dimensional framework of daily social interactions.

Always, it's advantageous for you to incorporate the force of the Ascendant positively in all parts of your life. But one area has always stood out in that regard -- the First House, which is where the Ascendant lies in your natal chart. There, in the area of assertiveness and personal power, the right use of that energy is most critical. In many situations you must react, respond, and play the cards you're dealt. But not in the First House. Here, you're in the driver's seat...and there are certain experiences you must claim for yourself, experiences of the nature of the Ascendant, even if the people about whom you care call you selfish for doing so.

The two factors, as we mentioned, are linked by a sextile -- traditionally seen as a "harmonious" or "mutually enhancing" aspect, often full of fast-paced events and emotional stimulation.

## The Means

If you happen to have a cold on the day you win the lottery, will that taint your memory of the big event? Probably not. Ten years later, you will have forgotten your runny nose. Ten minutes later, more likely.

Life and memory work that way. We prioritize certain kinds of events, experiencing them more vividly and remembering them far longer than the trivial and the predictable. The details of a typical Monday morning aren't going to last as long in the memory banks as images of your moment of glory or your darkest hour.

In exactly the same way, not all astrological events have the same impact. What we have considered so far are all first-string milestones in your life. The rest of what we'll be considering is less central -- but that's not to say unimportant. What follows is a set of supplementary transits and progressions, presented chronologically. They're not quite as profound in their implications as what we've seen, but they're not without emotional and existential consequences. If what we have explored in the previous pages can be viewed as an evolutionary invitation, then, to that lofty end, what follows is....

### "The Means"

As you'll see, each of these events stands as significant in its own right. But their deepest meanings lie in the way they interact with what we've considered in the pages above, enhancing and sometimes complicating the broader developmental patterns.

Cards on the table: you can skim the next several pages and, I think, learn some things about the coming months that will prove prophetic...and more importantly, helpful. But the real magic lies in putting all the pieces together, synthesizing them in your heart into an emotional whole -- just like you've done with, say, memories of a special summer long ago. No computer can do that for you.

Your own creativity, your own reflections on the material we're covering, your own translations, additions, corrections, amendments, and meditations -- these are what make the difference.

Let's continue.

### **Tr. Jupiter is Opposite Mercury**

In effect: in progress - Jun 6, 2012

Peak Date(s): Jun 1, 2012

Jupiter figured earlier in this analysis. Now we meet it again. As you may recall, this is the planet of possibilities and the seizing of opportunities. Jupiter currently is opposite your natal Mercury. The action peaks Jun 1, 2012.

First we must recognize that the action and the developmental pressures are rooted in the Fourth House, for that's the region of your birthchart through which Jupiter is currently passing.

Immediately that realization places our attention on two fundamental areas: The first is your home and family, which may well be making their needs felt now in the "key" of Jupiter. And the second, often confused by the first, is your own happiness and that deep soul-feeling inside yourself to which you must be true if your life is to stay on course. Under this kind of stimulation, a person often benefits from considering his or her deepest beliefs and attitudes from a conventional psycho-therapeutic perspective -- which in essence is to say, "Figure out what mom and dad taught you," and drop what is no longer consistent with your own course. But what's the issue? What part of your own life is at stake? To answer that, we turn our attention to Mercury, which is being invited into development by these familial and emotional pressures.

Your quickness, your alertness, your curiosity -- those are the dimensions of your life dominated by the planet Mercury. To say that Mercury represents your intelligence is quite accurate, but it's more connected to the natural style of your intelligence: not so much how smart you are as what interests you, and how your intelligence can be employed most pleasurably and efficiently. Intimately linked to such cerebral concerns is the question of your ability to communicate, since ideally there is some relationship between speech and forethought. Thus Mercury, the traditional Messenger of the Gods, is associated with both thought and conversation. When stimulated by a passing transit or progression, Mercury tends to speed up the flow of data in your life. You learn. You listen. You speak. Often events move at a hasty pace, and there's a feeling of excitement mixed with over-extension.

Your Tenth House came up earlier; now we see it in the spotlight again, once more informing us that the deepest, most essential factors in the situation we're considering all revolve around your role in the world -- your profession or job, your political (or metapolitical!) activities...in general, the image that strangers have of you. And what do right choices look like here? A large part of the answer lies with Mercury, a planet we described above, whose basic nature and values underlie what we might call your "Cosmic Job Description."

When Mercury hobnobs with Jupiter, an attitude of expansiveness (Jupiter) pervades the mind (Mercury). You are challenged now, like an optimistic Sherlock Holmes, to be alert to possibilities. Think inventively, think positively, and think big: that's the spirit. In some way, you have been underestimating your intelligence, verbal skills, or general competence. Recognize that, and change it.

The two factors, as we mentioned, are linked by an opposition, which suggests some kind of tension or tug-of-war between them. You are asked to adjust your position, to adapt to the demands of the world around you, and to find a middle-ground between the various opposing needs and values.

### **Tr. Jupiter is Conjunct Neptune**

In effect: Jun 2, 2012 - Jun 10, 2012

Peak Date(s): Jun 6, 2012

Jupiter figured earlier in this analysis. Now we meet it again. As you may recall, this is the planet of possibilities and the seizing of opportunities. Jupiter currently is conjunct your natal Neptune. The action peaks Jun 6, 2012.

First let's note that the action and the developmental pressures are rooted in the Fourth House, a dimension of your birthchart we've encountered before, for that's the house through which Jupiter is currently passing. Two areas are immediately focalized: your domestic or familial environment (which is now likely to make its presence felt in the spirit and mood of Jupiter) and that deep soul-feeling inside yourself to which you must be true if your life is to stay on course. We could call it your personal myth, or more simply your bliss. And again, in staying true to those levels of your being, you must now stay true to Jupiter. But what are the core questions? What area of your life is most affected by these domestic or psychological developments? The answer lies with Neptune, which is being invited into development during this long talk with yourself and the resultant sorting out of your real essence from your family training.

The natal Neptune -- that, as we have seen, symbolizes pure consciousness. It is the mystical planet, the part of your being that receives inspiration and, depending on your metaphysical tastes, either inner guidance or divine direction.

Your Fourth House figured previously in this report. Now we see it triggered again -- a clue that in your present circumstances, one of the most active factors is the need for a radical clarification, in your own mind, of your personal needs and wishes. There is something inside you, something of the nature of Neptune, to which you must be true if you are to be happy. And it is now under accelerating developmental pressure. Some of this process may even involve some re-definition of your role in your family, broadly defined.

When Jupiter consorts with Neptune, there's a cliché that should never be too far from your mind: all that glitters is not gold. Don't be tempted by "extraordinary possibilities" now, at least not without a careful look at the fine print, a consultation with a sober friend, and a painstaking effort to consider worst-case scenarios. What is really going on here is that a bright new vision is slowly forming inside you. It's real -- or more accurately, it's going to be real. Don't mistake its glowing emotional aura for something that is actually, physically, available in the present context.

As we mentioned, the aspect involved in the event we just described is the conjunction, which refers to a precise alignment between the natal planet and the moving trigger. Thus, the process emphasizes fusion, integration, and synthesis. Of all the possible aspects, the conjunction is the most intense. The explosion rattles your outward circumstances; but it originates inside you, and puts you in the driver's seat. It is appropriate for you to claim some new level of power, of self-expression, and of autonomy. If you don't, no one will do it for you; and the opportunity will evaporate.

### **Tr. Jupiter is Opposite Moon**

In effect: Jun 7, 2012 - Jun 16, 2012

Peak Date(s): Jun 11, 2012

Jupiter figured earlier in this analysis. Now we meet it again. As you may recall, this is the planet of possibilities and the seizing of opportunities. Jupiter currently is opposite your natal Moon. The action peaks Jun 11, 2012.



First let's note that the action and the developmental pressures are rooted in the Fourth House, a dimension of your birthchart we've encountered before, for that's the house through which Jupiter is currently passing. Two areas are immediately focalized: your domestic or familial environment (which is now likely to make its presence felt in the spirit and mood of Jupiter) and that deep soul-feeling inside yourself to which you must be true if your life is to stay on course. We could call it your personal myth, or more simply your bliss. And again, in staying true to those levels of your being, you must now stay true to Jupiter. But what are the core questions? What area of your life is most affected by these domestic or psychological developments? The answer lies with the Moon, which is being invited into development during this long talk with yourself and the resultant sorting out of your real essence from your family training.

The natal Moon -- that, as we have seen, represents your inner life, your emotions, moods, and attitudes.

Your Tenth House came up earlier; now we see it in the spotlight again, once more informing us that the deepest, most essential factors in the situation we're considering all revolve around your role in the world -- your profession or job, your political (or metapolitical!) activities...in general, the image that strangers have of you. And what do right choices look like here? A large part of the answer lies with the Moon, a planet we described above, whose basic nature and values underlie what we might call your "Cosmic Job Description."

When the Moon interacts with Jupiter, the mood of life generally turns jovial and optimistic. There is an attitude of hopefulness and an alertness to possibility. It is a season of enhanced imagination, especially about your own potential future. In general, the best policy is to be bold in your dreaming, but cautious about signing on the dotted line. What you envision creatively now is probably quite sound, but it will want some editing in the cold light of dawn.

The two factors, as we mentioned, are linked by an opposition, which suggests some kind of tension or tug-of-war between them. You are asked to adjust your position, to adapt to the demands of the world around you, and to find a middle-ground between the various opposing needs and values.

### **Tr. Jupiter is Trine Ascendant**

In effect: Jun 7, 2012 - Jun 16, 2012

Peak Date(s): Jun 12, 2012

Jupiter figured earlier in this analysis. Now we meet it again. As you may recall, this is the planet of possibilities and the seizing of opportunities. Jupiter currently is trine your natal Ascendant. The action peaks Jun 12, 2012.

First let's note that the action and the developmental pressures are rooted in the Fourth House, a dimension of your birthchart we've encountered before, for that's the house through which Jupiter is currently passing. Two areas are immediately focalized: your domestic or familial environment (which is now likely to make its presence felt in the spirit and mood of Jupiter) and that deep soul-feeling inside yourself to which you must be true if your life is to stay on course. We could call it your personal myth, or more simply your bliss. And again, in

staying true to those levels of your being, you must now stay true to Jupiter. But what are the core questions? What area of your life is most affected by these domestic or psychological developments? The answer lies with the Ascendant, which is being invited into development during this long talk with yourself and the resultant sorting out of your real essence from your family training.

The natal Ascendant -- that, as we have seen, represents your style, how you go about translating your inner worlds into the two-dimensional framework of daily social interactions.

The two factors, as we mentioned, are linked by a trine -- traditionally seen as a "good" aspect, but more accurately seen as simply enhancing or supportive. Generally speaking, with trines there is an opportunity...but to seize it, you must supply the initiative.

### **Tr. Jupiter is Conjunct Pluto**

In effect: Jun 25, 2012 - Jul 5, 2012

Peak Date(s): Jun 30, 2012

Jupiter figured earlier in this analysis. Now we meet it again. As you may recall, this is the planet of possibilities and the seizing of opportunities. Jupiter currently is conjunct your natal Pluto. The action peaks Jun 30, 2012.

First let's note that the action and the developmental pressures are rooted in the Fourth House, a dimension of your birthchart we've encountered before, for that's the house through which Jupiter is currently passing. Two areas are immediately focalized: your domestic or familial environment (which is now likely to make its presence felt in the spirit and mood of Jupiter) and that deep soul-feeling inside yourself to which you must be true if your life is to stay on course. We could call it your personal myth, or more simply your bliss. And again, in staying true to those levels of your being, you must now stay true to Jupiter. But what are the core questions? What area of your life is most affected by these domestic or psychological developments? The answer lies with Pluto, which is being invited into development during this long talk with yourself and the resultant sorting out of your real essence from your family training.

The natal Pluto -- that, as we have seen, symbolizes your own native capacity to probe into yourself and heal yourself. It always deals with the hurts associated with the humiliations and defeats that life has offered us, and the process of going beyond them.

Your Fourth House figured previously in this report. Now we see it triggered again -- a clue that in your present circumstances, one of the most active factors is the need for a radical clarification, in your own mind, of your personal needs and wishes. There is something inside you, something of the nature of Pluto, to which you must be true if you are to be happy. And it is now under accelerating developmental pressure. Some of this process may even involve some re-definition of your role in your family, broadly defined.

When Jupiter gets hooked up with Pluto, think big and claim a victory. One is available, if you move decisively and know exactly what you really want. And therein lies the rub. All of us experience humiliating losses, insults, and defeats in the course of life. As you adapt to living

with them, an attitude of disempowerment or futility can creep in. Conquering that mind-set is the real aim here. The truth is that psychologically you need a triumph now -- and synchronistically, the universe is ready to cooperate.

The two factors, as we mentioned, are linked by a conjunction -- the most powerful of the geometric aspects and one that suggests convergence, intensification, and often a new beginning.

### **Tr. Jupiter is Sextile Saturn**

In effect: Jul 6, 2012 - Feb 26, 2013

Peak Date(s): Jul 11, 2012; Jan 19, 2013; Feb 10, 2013

Jupiter figured earlier in this analysis. Now we meet it again. As you may recall, this is the planet of possibilities and the seizing of opportunities. Jupiter currently is sextile your natal Saturn. The action peaks Jul 11, 2012; Jan 19, 2013; Feb 10, 2013.

First let's note that the action and the developmental pressures are rooted in the Fourth House, a dimension of your birthchart we've encountered before, for that's the house through which Jupiter is currently passing. Two areas are immediately focalized: your domestic or familial environment (which is now likely to make its presence felt in the spirit and mood of Jupiter) and that deep soul-feeling inside yourself to which you must be true if your life is to stay on course. We could call it your personal myth, or more simply your bliss. And again, in staying true to those levels of your being, you must now stay true to Jupiter. But what are the core questions? What area of your life is most affected by these domestic or psychological developments? The answer lies with Saturn, which is being invited into development during this long talk with yourself and the resultant sorting out of your real essence from your family training.

The natal Saturn -- that, as we have seen, symbolizes your capacity for self-discipline and patience. Generally, it marks an area where you will be challenged to achieve excellence...or tempted to give up and sink into sorrow and self-pity.

Your Seventh House occupied our thoughts earlier in these pages; now we see it triggered again, suggesting that at the center of the circumstances we're considering there exists a fundamental inter-dependency: what you must do, you cannot do alone. A pair of ideas figure here: The first is that by emphasizing the spirit of Saturn in your closest relationships, you improve them. The second is that your natural partners are themselves people of the nature of Saturn, and that should help you recognize them.

When Jupiter interacts with Saturn, you experience an odd confluence of providential fortune (Jupiter) and daunting impediments (Saturn). Essentially, something very good is available to you now, but to attain it you must undertake a herculean effort. More profoundly, that effort itself will crystallize a very specific transformation in you: it will grant you the dignity of your advancing maturity.

The two factors, as we mentioned, are linked by a sextile -- traditionally seen as a "harmonious" or "mutually enhancing" aspect, often full of fast-paced events and emotional

stimulation.

**Tr. Jupiter is Trine Venus**

In effect: Jul 11, 2012 - Mar 8, 2013

Peak Date(s): Jul 16, 2012; Jan 3, 2013; Feb 26, 2013

Jupiter figured earlier in this analysis. Now we meet it again. As you may recall, this is the planet of possibilities and the seizing of opportunities. Jupiter currently is trine your natal Venus. The action peaks Jul 16, 2012; Jan 3, 2013; Feb 26, 2013.

First let's note that the action and the developmental pressures are rooted in the Fourth House, a dimension of your birthchart we've encountered before, for that's the house through which Jupiter is currently passing. Two areas are immediately focalized: your domestic or familial environment (which is now likely to make its presence felt in the spirit and mood of Jupiter) and that deep soul-feeling inside yourself to which you must be true if your life is to stay on course. We could call it your personal myth, or more simply your bliss. And again, in staying true to those levels of your being, you must now stay true to Jupiter. But what are the core questions? What area of your life is most affected by these domestic or psychological developments? The answer lies with Venus, which is being invited into development during this long talk with yourself and the resultant sorting out of your real essence from your family training.

The natal Venus -- that, as we have seen, is where you store your romantic and affiliative sensibilities, along with your aesthetic tastes.

Your Eighth House engaged us previously in the report. Now we see it provoked again, indicating that your attitude toward the circumstances we're considering reflects a fundamental distortion. It has to do with your own psychological scar-tissue, and it biases your thinking in the direction of Venus, as we just described it. Follow your moods down into the labyrinths of your psyche; pay attention to your dreams, your fantasies, and your unspoken hungers. And speak nakedly and truly with someone of the nature of Venus, who will help you clarify your own real needs.

When Venusian energies splice together with Jupiterian ones, opportunity (Jupiter) comes to you through other people (Venus). Sometimes what we might call "dumb luck" makes itself felt, but it doesn't hurt to help it along by understanding the planetary "rules of the game." Basically, they boil down to this: you've got to ask for what you want, you've got to know that you deserve it, and you've got to look that way...which is to say, there's no room for being apologetic, ashamed, or defensive.

The two factors, as we mentioned, are linked by a trine -- traditionally seen as a "good" aspect, but more accurately seen as simply enhancing or supportive. Generally speaking, with trines there is an opportunity...but to seize it, you must supply the initiative.

**Pr. Moon is Trine Uranus**

In effect: Jul 21, 2012 - Sep 20, 2012

Peak Date(s): Aug 21, 2012

The progressed Moon figures in our thinking again. As you may recall, the Moon shows what you are feeling. It gives us insight into your mood, concerns, and general attitude...into "where your heart is," in other words.

First, factor in that the action and the developmental invitation are unfolding in the Fifth House, for that's the region of your birthchart through which the Moon is now passing. Immediately, the focus on Fifth House energies suggests that you are currently entering an existential territory that requires creativity, unabashed self-expression, and experimental audacity. Your "inner child" is a little cranky now, demanding some fun and some self-indulgence, all of which is entirely necessary and appropriate to your journey at the present time. Thus, life's pleasures -- games, vacations, sports, loving interactions -- deserve attention now. Whether you know it or not, you need a boost...and you'll get it in part from the "playmates" and "new toys" of the nature of the Moon that are now passingly, fleetingly available to you. Don't let them get away! But what's the core issue? What part of your own health hinges on this renewal? To answer that, we turn our attention to Uranus, which is being invited into development by this period of playful, celebratory creativity.

How is the progressed Moon currently impacting on you? It is trine your natal Uranus: Aug 21, 2012. In thinking about this, remember that progressions are slow-motion events, and that this event simply peaks then; it will be affecting your mood for a period of two or three months on either side of that date.

There's a wild card in everyone, a rebellious, independent, free-spirited force that hates neckties and phony courtesies and all the slick moves that keep corporations and families from splitting apart. Astrologers call it Uranus. Stripped to its essence, this part of your astrological psyche is concerned primarily with the process of individuation, which boils down to whittling away all the parts of yourself which have arisen almost accidentally as side effects of your social background. When stimulated by transits or progressions, Uranus triggers your rebellions. It asks you to shed something unauthentic, unreal, or limiting in your life. Often it brings lightning-quick developments and unexpected circumstances. Almost always, there is a confrontation between you and some figure of authority, past or present.

Your Eighth House engaged us previously in the report. Now we see it provoked again, indicating that your attitude toward the circumstances we're considering reflects a fundamental distortion. It has to do with your own psychological scar-tissue, and it biases your thinking in the direction of Uranus, as we just described it. Follow your moods down into the labyrinths of your psyche; pay attention to your dreams, your fantasies, and your unspoken hungers. And speak nakedly and truly with someone of the nature of Uranus, who will help you clarify your own real needs.

When the Moon is alloyed with Uranus, a mood (Moon) of rebellion, defiance, and independence (Uranus) fills the psyche. Deep in your heart, words are forming: "Why, for two cents I'd..." This is a delicate combination, easily an explosive one. What is happening is that something of your true individuality is making itself felt -- but not necessarily understood. The impulses now flooding your mind will ultimately prove useful and valid, but it's good to let them marinate for a few weeks or months before moving precipitously to Thule.

The two factors, as we mentioned, are linked by a trine -- traditionally seen as a "good" aspect, but more accurately seen as simply enhancing or supportive. Generally speaking, with trines there is an opportunity...but to seize it, you must supply the initiative.

**Tr. Jupiter is Trine Uranus**

In effect: Aug 29, 2012 - Apr 24, 2013

Peak Date(s): Sep 8, 2012; Oct 29, 2012; Apr 19, 2013

Jupiter figured earlier in this analysis. Now we meet it again. As you may recall, this is the planet of possibilities and the seizing of opportunities. Jupiter currently is trine your natal Uranus. The action peaks Sep 8, 2012; Oct 29, 2012; Apr 19, 2013.

First, factor in that the movement and the evolutionary invitation are occurring in the Fifth House, for that's the region of your birthchart through which Jupiter is currently passing. We've met the symbolism of this house before: creativity, unabashed self-expression, and sheer playfulness. You've reached a point in your journey where you need your batteries recharged, your "inner child" re-invigorated. A general loosening up is required. Life's pleasures -- sports, games, vacations, new friends, loving interactions -- need to figure in your experience now. But what part of your being most requires this rejuvenation? The answer lies with Uranus, which is being invited into development during this playful time of renewal and discovery.

The natal Uranus -- that, as we have seen, represents your natural, uncensored individuality and your ability to claim and defend it.

Your Eighth House engaged us previously in the report. Now we see it provoked again, indicating that your attitude toward the circumstances we're considering reflects a fundamental distortion. It has to do with your own psychological scar-tissue, and it biases your thinking in the direction of Uranus, as we just described it. Follow your moods down into the labyrinths of your psyche; pay attention to your dreams, your fantasies, and your unspoken hungers. And speak nakedly and truly with someone of the nature of Uranus, who will help you clarify your own real needs.

When Jupiter interacts with Uranus, unanticipated opportunities arise. It's as though the Cosmos manifests as Santa Claus; gifts are given to you, often completely "out of the blue." Accept them. The psycho-spiritual theme here lies in loving yourself enough to embrace abundance, and many times the test comes and passes so quickly that success depends more upon reflexive self-confidence than upon any philosophical "position papers" about self-esteem.

The two factors, as we mentioned, are linked by a trine -- traditionally seen as a "good" aspect, but more accurately seen as simply enhancing or supportive. Generally speaking, with trines there is an opportunity...but to seize it, you must supply the initiative.

**Tr. Uranus is Trine Saturn**

In effect: Sep 3, 2012 - Mar 11, 2013

Peak Date(s): Sep 29, 2012; Feb 20, 2013

Uranus came up earlier in this report. Now we encounter it again. As you may recall, this

planet represents the "wild card" in life, and often correlates with unexpected events. Behind the roller-coaster ride, the real issue is your ability to claim your true individuality, even if that involves destabilizing certain aspects of your existing circumstances. Uranus currently is trine your natal Saturn. The action peaks Sep 29, 2012; Feb 20, 2013.

Let's first understand that the action is in the Second House, for that's where Uranus is currently located in your chart. We've met this house before. As you may recall, it has to do with self-confidence, especially when that confidence is rooted in your personal resources -- and that means more than just money. The time has come to act in the spirit of Uranus, as we just described it, and to claim the skills and material you need. But what's the point? What are the real questions? The answer lies with Saturn, which is being invited into development during this time of solidification and consolidation in your life.

The natal Saturn -- that, as we have seen, symbolizes your capacity for self-discipline and patience. Generally, it marks an area where you will be challenged to achieve excellence...or tempted to give up and sink into sorrow and self-pity.

Your Seventh House occupied our thoughts earlier in these pages; now we see it triggered again, suggesting that at the center of the circumstances we're considering there exists a fundamental inter-dependency: what you must do, you cannot do alone. A pair of ideas figure here: The first is that by emphasizing the spirit of Saturn in your closest relationships, you improve them. The second is that your natural partners are themselves people of the nature of Saturn, and that should help you recognize them.

When Saturn interacts with Uranus, avalanche is the ruling metaphor. "Stuck" situations can only stay stuck for so long; sooner or later, when enough water builds up behind the logjam, something's got to give. Expect explosive developments, and prepare for them in two ways. The first: through dispassionate analysis you can anticipate eventualities and have some tactics for damage-control in place. The second: through imaginative forethought you can recognize some exciting emerging possibilities and be ready to seize them.

The two factors, as we mentioned, are linked by a trine -- traditionally seen as a "good" aspect, but more accurately seen as simply enhancing or supportive. Generally speaking, with trines there is an opportunity...but to seize it, you must supply the initiative.

### **Tr. Uranus is Sextile Pluto**

In effect: Nov 4, 2012 - Jan 20, 2013

Peak Date(s): sometime after the report period.

Uranus came up earlier in this report. Now we encounter it again. As you may recall, this planet represents the "wild card" in life, and often correlates with unexpected events. Behind the roller-coaster ride, the real issue is your ability to claim your true individuality, even if that involves destabilizing certain aspects of your existing circumstances. Uranus currently is sextile your natal Pluto. The action peaks sometime after the report period..

Let's first understand that the action is in the Second House, for that's where Uranus is currently located in your chart. We've met this house before. As you may recall, it has to do

with self-confidence, especially when that confidence is rooted in your personal resources -- and that means more than just money. The time has come to act in the spirit of Uranus, as we just described it, and to claim the skills and material you need. But what's the point? What are the real questions? The answer lies with Pluto, which is being invited into development during this time of solidification and consolidation in your life.

The natal Pluto -- that, as we have seen, symbolizes your own native capacity to probe into yourself and heal yourself. It always deals with the hurts associated with the humiliations and defeats that life has offered us, and the process of going beyond them.

Your Fourth House figured previously in this report. Now we see it triggered again -- a clue that in your present circumstances, one of the most active factors is the need for a radical clarification, in your own mind, of your personal needs and wishes. There is something inside you, something of the nature of Pluto, to which you must be true if you are to be happy. And it is now under accelerating developmental pressure. Some of this process may even involve some re-definition of your role in your family, broadly defined.

When explosive Uranus collides with unsettling Pluto, secrets long-concealed are brought to light, while unexpected, irresistible forces enter your circumstances. What one might call the "Hand of Fate" makes itself felt, sweeping away, often with frightening speed, situations which have outlived their evolutionary usefulness. The challenge to you here lies in adapting to a radically new perspective on your life.

The two factors, as we mentioned, are linked by a sextile -- traditionally seen as a "harmonious" or "mutually enhancing" aspect, often full of fast-paced events and emotional stimulation.

### **Pr. Moon is Square Mars**

In effect: Nov 5, 2012 - Jan 5, 2013

Peak Date(s): Dec 6, 2012

The progressed Moon figures in our thinking again. As you may recall, the Moon shows what you are feeling. It gives us insight into your mood, concerns, and general attitude...into "where your heart is," in other words.

First, factor in that the movement and the evolutionary invitation are occurring in the Fifth House, for that's the region of your birthchart through which the Moon is currently passing. We've met the symbolism of this house before: creativity, unabashed self-expression, and sheer playfulness. You've reached a point in your journey where you need your batteries recharged, your "inner child" re-invigorated. A general loosening up is required. Life's pleasures -- sports, games, vacations, new friends, loving interactions -- need to figure in your experience now. But what part of your being most requires this rejuvenation? The answer lies with Mars, which is being invited into development during this playful time of renewal and discovery.

How is the progressed Moon currently impacting on you? It is square your natal Mars: Dec 6, 2012. In thinking about this, remember that progressions are slow-motion events, and that this event simply peaks then; it will be affecting your mood for a period of two or three months



on either side of that date.

Sheer animal vitality -- that's Mars. In your natal chart, it represents your boldness and your pluckiness: what gets your blood flowing. Or boiling. All passions are linked to Mars. Anger and your ability to defend your boundaries are part of the picture. So is your inner fire -- your enthusiasm, your intensity, your sexual desire. When triggered by a passing transit or progression, Mars often signals a "go for it" situation developing in your life, but to make the best of it, you'll need to be brave and assertive. Such transits or progressions can also warn you of upcoming battles, and in general it's wiser to seize the initiative rather than surrender your power to the whimsies of circumstance.

Your Eighth House engaged us previously in the report. Now we see it provoked again, indicating that your attitude toward the circumstances we're considering reflects a fundamental distortion. It has to do with your own psychological scar-tissue, and it biases your thinking in the direction of Mars, as we just described it. Follow your moods down into the labyrinths of your psyche; pay attention to your dreams, your fantasies, and your unspoken hungers. And speak nakedly and truly with someone of the nature of Mars, who will help you clarify your own real needs.

When the Moon interacts with Mars, the mood of life turns hot. Fiery energies course through the psyche, filling you with passionate intensity. Positively, the linking of these two factors can encourage you to take the initiative, to state your needs forcefully and unambiguously, and to defend what is rightfully yours. Be careful; this astrological linkage may incline you toward extremes of temper, unintentionally destructive exchanges with the people with whom you share your life, and possibly the sort of accidents which are created by unprocessed tension, anger, or anxiety.

The two factors, as we mentioned, are linked by a square -- traditionally seen as a "bad" aspect, but more accurately seen as simply frictional. Squares generally suggest tough choices, external pressures, and at least some stress.

### **Pr. Midheaven is Trine Moon**

In effect: in progress - Apr 23, 2013

Peak Date(s): sometime before the report period.

Deep-sea voyagers observe that even the largest sailboat becomes extraordinarily small after a week or two at sea. Every quirk in the character of each crew member is magnified, and the way a person scratches his chin can become a motivation for homicide. At that microscopic social distance, personality looms painfully large. Now turn it around and look at the other end of the spectrum. How do people appear at enormous social distances? We no longer are aware of introversion or extroversion, of expression, of feeling or cold, clear reason. At those ranges, we stop seeing who people are. Instead, we think of them in terms of what they do or what they represent.

Astrologically, this dimension of our humanness is symbolized by the Midheaven. What we do for a living is almost always a significant piece of the puzzle here, but it's misleading to limit our understanding of the Midheaven to career concerns. Being known as a liberal or a

conservative, a feminist, an environmentalist, a patron of the arts...all are Midheaven roles, even though we don't make any money doing them. (Usually the opposite, in fact.) One's role in the community must evolve as we mature, and that process is linked to the motion of the progressed Midheaven, which has gone critical for you this year. Typically, progressed-Midheaven events mark changes in your social status. More deeply, they suggest a need arising in you for a more multi-dimensional role in the world. You are ready to bear a new kind of fruit in the community; something inside you is ready to be unveiled...and an old role has grown thin and tired.

Let's first understand that the action is in the Second House, for that's where the Midheaven is currently located in your chart. We've met this house before. As you may recall, it has to do with self-confidence, especially when that confidence is rooted in your personal resources -- and that means more than just money. The time has come to act in the spirit of the Midheaven, as we just described it, and to claim the skills and material you need. But what's the point? What are the real questions? The answer lies with the Moon, which is being invited into development during this time of solidification and consolidation in your life.

How is the progressed Midheaven currently touching you? It is trine your natal Moon: sometime before the report period.. In thinking about this, remember that progressions are slow-moving events and that the action simply peaks then; it will be in effect throughout the period of this report.

Astrology is the basic "programming language" of human consciousness. That may seem like a bold claim, but it's easily tested and proven. Pick someone who imagines he or she knows nothing at all about astrology. Ask them what the Moon means. After an initially dumbfounded look, you'll probably get an answer such as, "I dunno...feelings?" Which is quite correct. The mind naturally associates the Moon with darkness, with moonlight...and therefore with ghosts and romance, magic and tears, vulnerability and exhilaration: emotions. Deep inside us all is a subjective realm. Love and hate, joy and sorrow, dwell there. So do our daydreams and our creativity. If we could "average" a person's mood over a lifetime, we'd have an excellent profile of his or her Moon. When the Moon is triggered into development by a passing transit or progression, your inner life is stimulated. You feel stirred up. Powerful currents of emotional energy, for weal or woe, are released into your psyche. The very basis of happiness for you is evolving.

Your Tenth House came up earlier; now we see it in the spotlight again, once more informing us that the deepest, most essential factors in the situation we're considering all revolve around your role in the world -- your profession or job, your political (or metapolitical!) activities...in general, the image that strangers have of you. And what do right choices look like here? A large part of the answer lies with the Moon, a planet we described above, whose basic nature and values underlie what we might call your "Cosmic Job Description."

The two factors, as we mentioned, are linked by a trine -- traditionally seen as a "good" aspect, but more accurately seen as simply enhancing or supportive. Generally speaking, with trines there is an opportunity...but to seize it, you must supply the initiative.

### **Tr. Jupiter is Square Mars**

---

In effect: May 2, 2013 - May 11, 2013  
Peak Date(s): May 7, 2013

Jupiter figured earlier in this analysis. Now we meet it again. As you may recall, this is the planet of possibilities and the seizing of opportunities. Jupiter currently is square your natal Mars. The action peaks May 7, 2013.

First, factor in that the movement and the evolutionary invitation are occurring in the Fifth House, for that's the region of your birthchart through which Jupiter is currently passing. We've met the symbolism of this house before: creativity, unabashed self-expression, and sheer playfulness. You've reached a point in your journey where you need your batteries recharged, your "inner child" re-invigorated. A general loosening up is required. Life's pleasures -- sports, games, vacations, new friends, loving interactions -- need to figure in your experience now. But what part of your being most requires this rejuvenation? The answer lies with Mars, which is being invited into development during this playful time of renewal and discovery.

The natal Mars -- that, as we have seen, indicates your courage, or at least an area of your life where you'll need it!

Your Eighth House engaged us previously in the report. Now we see it provoked again, indicating that your attitude toward the circumstances we're considering reflects a fundamental distortion. It has to do with your own psychological scar-tissue, and it biases your thinking in the direction of Mars, as we just described it. Follow your moods down into the labyrinths of your psyche; pay attention to your dreams, your fantasies, and your unspoken hungers. And speak nakedly and truly with someone of the nature of Mars, who will help you clarify your own real needs.

When Jupiter energies interact with Mars energies, opportunity coincides with the need for assertiveness. There is something here for you to claim; but to succeed, you'll have to be brave. A "paper tiger" figures somehow in the situation: something that's not nearly as scary as it may initially appear.

The two factors, as we mentioned, are linked by a square -- traditionally seen as a "bad" aspect, but more accurately seen as simply frictional. Squares generally suggest tough choices, external pressures, and at least some stress.

### **Pr. Midheaven is Sextile Ascendant**

In effect: in progress - May 16, 2013  
Peak Date(s): sometime before the report period.

We encountered the progressed Midheaven a while back. To refresh your memory, it triggers changes in your profession or your social status...what we might call your role in the community. Currently, your progressed Midheaven is quite active, stimulating yet another point in your birthchart.

Let's first understand that the action is in the Second House, for that's where the Midheaven is currently located in your chart. We've met this house before. As you may recall, it has to do

with self-confidence, especially when that confidence is rooted in your personal resources -- and that means more than just money. The time has come to act in the spirit of the Midheaven, as we just described it, and to claim the skills and material you need. But what's the point? What are the real questions? The answer lies with the Ascendant, which is being invited into development during this time of solidification and consolidation in your life.

How is the progressed Midheaven currently touching you? It is sextile your natal Ascendant: sometime before the report period.. In thinking about this, remember that progressions are slow-moving events and that the action simply peaks then; it will be in effect throughout the period of this report.

The natal Ascendant -- that, as we have seen, represents your style, how you go about translating your inner worlds into the two-dimensional framework of daily social interactions.

Your First House came up earlier; now we see it stimulated again, once more suggesting that the deepest, most central factors in the situation we're considering all hinge upon the choices you make and the stands you take. "Who are you?" -- that's the essential question. And, at least for now, a big chunk of the answer lies with the Ascendant, a planet whose needs, interests, and predilections always figure prominently in your smartest, most self-aware moves.

The two factors, as we mentioned, are linked by a sextile -- traditionally seen as a "harmonious" or "mutually enhancing" aspect, often full of fast-paced events and emotional stimulation.

## The Details

In the mood for Mardi Gras? If you live in Chicago, it helps to know that New Orleans lies to the south. Head west or east and you'll never arrive . . .

What we've done in the previous pages is to show you the direction to New Orleans. We've looked at the big astrological themes that are affecting you this year . . .

As a reminder, at the beginning of our analysis of each month's events we'll make reference to any major configurations covered previously which happen to be reaching peaks of intensity then -- and please recall that some of them will have more than a single peak during the report period. There won't be any more analysis; just an allusion to the events so you can go back and review the earlier material, and see the patterns of the month in the light of the year's heavier transits and progressions.

Please remember that the fleeting, often forgettable influences we discuss in the following pages must always draw their real meaning from the far more monumental events we've already described. A "discussion with the boss," for example, is going to take on particular significance during a month when your whole career is up for grabs!

These minor transits unfold quickly. It's a rare week that doesn't contain at least a few. A report that discussed them all in the kind of microscopic detail we've applied to the major events would be several inches thick. In order to cover the daily astrological kaleidoscope within the practical limitations of the space available, we've resorted to producing capsulized one-sentence nuggets that compress a lot of information into a few words. So, slow down, shift gears, and let them wash over you. Think of these images more as daily meditations than as the kind of full-blown explanations to which you've gotten accustomed in the previous sections of SKYLOG.

One brief reminder: remember that many astrological events have not one but several peaks of intensity, so you may find a given "Invitation" or "Means" coming up several times in the pages that follow.

Even minor astrological events commonly have an impact over several days. In the following month-by-month analysis, configurations are listed chronologically according to the days they "peak" -- but don't take that date narrowly. The most colorful events and profoundest realizations might easily occur a day or two later or earlier.

### June Invitation Peaks

**Jun 20, 2012 - Pr. Moon enters Fifth House**

### June Mean Peaks

**Jun 01, 2012 - Tr. Jupiter Opposite Mercury**

**Jun 06, 2012 - Tr. Jupiter Conjunct Neptune**

**Jun 11, 2012 - Tr. Jupiter Opposite Moon**

**Jun 12, 2012 - Tr. Jupiter Trine Ascendant**

**Jun 30, 2012 - Tr. Jupiter Conjunct Pluto**

### June The Details

**Jun 01, 2012 - Tr. Mercury Square Mars**

Keywords: self-expressive dialog conflicts with your instinctive spooky assertiveness.

**Jun 04, 2012 - Neptune turns Retrograde (at 03°Pi09' in your 01st House)**

Aspects: Square Moon, Square Mercury, Square Neptune, Square Pluto.

**Jun 05, 2012 - Tr. Sun Trine Uranus**

Keywords: playful nature enhances your usual psychologically deep originality.

**Jun 05, 2012 at 01:31 PM - Tr. Moon enters Twelfth House**

The Moon in a month passes through all twelve houses of your chart. In so doing, it correlates with the passing whimsies of mood. One afternoon you're bright and cheery, the following morning you're blue...but energetic again after lunch. It doesn't amount to much, and it's not really very important in practical terms -- with one exception: the passage of the Moon through the Twelfth House. During that time you are going through a kind of emotional moulting, ending one cycle and preparing to begin another. Your attentions and energies are turned inward. Accept that, handle it well, and the period -- usually a couple of days -- is quiet and contemplative. It may even be rather pleasant. But if you try to keep up your normal level of activity, you'll find yourself confused, flat, and prone to dumb accidents. So when the Moon enters your Twelfth House, make sure that you have some unstructured time. Minimize distractions. Put off any significant new beginnings for a couple of days. And take a few unhurried breaths. This month, the transiting Moon crosses into your natal Twelfth House Jun 05, 2012 at 01:31 PM, and emerges Jun 07, 2012 at 08:35 AM, when a new emotional cycle begins.

**Jun 06, 2012 - Tr. Venus Trine Uranus**

Keywords: child-like relating supports your typical psychologically deep originality.

**Jun 08, 2012 - Tr. Mars Sextile Jupiter**

Keywords: passionate courage excites your native intellectually hungry gambling.

**Jun 09, 2012 - Tr. Sun Square Mars**

Keywords: child-like identity conflicts with your instinctive probing courage.

**Jun 10, 2012 - Tr. Mars Conjunct Mars**

Keywords: passionate swordsmanship fuses with your natural penetratingly real courage.

**Jun 11, 2012 - Tr. Mercury Square Venus**

Keywords: supportive conversation clashes with your instinctive passionate affection.

**Jun 15, 2012 - Tr. Mercury Square Uranus**

Keywords: responsible conversation clashes with your instinctive emotionally brave autonomy.

**Jun 17, 2012 - Tr. Mercury Trine Jupiter**

Keywords: painstaking dialog supports your typical intellectually hungry opportunity.

**Jun 17, 2012 - Tr. Mercury Sextile Mars**

Keywords: competent communication excites your native psychologically deep swordsmanship.

**Jun 19, 2012 - Tr. Mars Sextile Sun**

Keywords: spooky swordsmanship excites your native questing personality.

**Jun 20, 2012 - Tr. Mercury Trine Sun**

Keywords: painstaking conversation supports your typical questing identity.

**Jun 24, 2012 - Tr. Mercury Trine Mercury**

Keywords: dutiful conversation enhances your usual career communication.

**Jun 24, 2012 - Tr. Mercury Sextile Neptune**

Keywords: painstaking conversation excites your native watchful contemplation.

**Jun 25, 2012 - Saturn goes Direct (at 22°Li46' in your 09th House)**

Aspects: Conjunct Uranus, Square Ascendant.

**Jun 25, 2012 - Tr. Mercury Trine Moon**

Keywords: dutiful communication supports your typical vocational awareness.

**Jun 25, 2012 - Tr. Mercury Opposite Ascendant**

The mythological Mercury is the "Messenger of the Gods." The same is true of the transiting Mercury, which speeds around your chart, prompting conversations, dialogs, and sermons, both outgoing and incoming. It triggers the arrival of letters, faxes, and phone calls, and provokes the weaving of new data into your viewpoint. When it arrives at a sensitive point, your task is to listen, to ask questions, and to share intelligence.

Mercury enters your Seventh House Jun 25, 2012. Traditionally the "House of Marriage," the Seventh House is actually a reference to anyone and everyone with whom you are open to

intimacy. Whenever this part of the chart is stimulated, it's a signal that someone is coming into your life to adjust your attitude or your course, and that the adjustment is quite necessary and appropriate. Who is this person, and what is the message? We don't know exactly, but here's a clue: he, she, or it looks, feels, and sounds a lot like the Mercury. One bottom line: the quality of your deepest human connections profoundly affects the quality of your life, and at least one of these human connections needs some attention during these days.

**Jun 26, 2012 - Tr. Venus Trine Venus**

Keywords: psychologically sophisticated human connection enhances your usual probing affection.

**Jun 28, 2012 - Tr. Sun Square Venus**

Keywords: competent nature conflicts with your instinctive penetratingly real human connection.

**Jun 28, 2012 - Tr. Venus Trine Venus**

Keywords: emotional affection enhances your usual passionate relating.

**Jun 28, 2012 - Tr. Mars Sextile Mercury**

Keywords: emotionally brave swordsmanship stimulates your normal work-oriented communication.

**Jun 29, 2012 - Tr. Mercury Sextile Pluto**

Keywords: interpersonally sensitive conversation excites your native watchful intensity.

**July Invitation Peaks****Jul 30, 2012 - Tr. Pluto Square Venus****July Mean Peaks****Jul 11, 2012 - Tr. Jupiter Sextile Saturn****Jul 16, 2012 - Tr. Jupiter Trine Venus****July The Details****Jul 01, 2012 - Tr. Mars Trine Neptune**

Keywords: psychologically deep swordsmanship supports your typical psychologically sophisticated inspiration.

**Jul 02, 2012 - Tr. Mercury Conjunct Saturn**

Keywords: collaborative dialog combines with your characteristic interpersonally sensitive integrity.



**Jul 02, 2012 at 11:53 PM - Tr. Moon enters Twelfth House**

This month, the transiting Moon crosses into your natal Twelfth House again Jul 02, 2012 at 11:53 PM. It emerges and a new emotional cycle begins Jul 04, 2012 at 06:43 PM. As we discussed earlier, this represents a brief period in which you serve your own ultimate interests best by relaxing a bit, taking some extra precautions against physical mishaps, and most importantly, delaying any major new starts, insofar as that's possible.

**Jul 03, 2012 - Tr. Mercury Sextile Venus**

Keywords: collaborative conversation stimulates your normal emotionally brave affection.

**Jul 03, 2012 - Tr. Mars Sextile Moon**

Keywords: spooky courage stimulates your normal on-the-job attitude.

**Jul 06, 2012 - Tr. Sun Square Uranus**

Keywords: helpful personality clashes with your instinctive probing autonomy.

**Jul 09, 2012 - Tr. Sun Trine Jupiter**

Keywords: responsible personality enhances your usual routine-shattering exuberance.

**Jul 10, 2012 - Tr. Sun Sextile Mars**

Keywords: helpful nature stimulates your normal psychologically deep courage.

**Jul 11, 2012 - Tr. Mars Trine Pluto**

Keywords: emotionally brave courage enhances your usual cautious intensity.

**Jul 13, 2012 - Uranus turns Retrograde (at 08°Ar32' in your 02nd House)**

Aspects: Opposite Venus, Trine Saturn, Opposite Uranus, Sextile Pluto.

**Jul 14, 2012 at 08:09 PM - Mercury turns Retrograde**

Three, maybe four times in the course of a year, the planet Mercury spends three weeks or so going backwards in the sky, a period we call Mercury Retrograde. Practicality sometimes intervenes, but to the extent that you can arrange it, you are better off if you can avoid signing anything important during this period, buying anything mechanical (unless its failure would be of trivial consequence), initiating travel, or attempting significant communications by phone or mail. This, of course, is a lot to ask; and sticking to it too firmly starts to verge on Cosmic Paranoia. Still, there is a heightened tendency for objects, messages, and plans to go awry during this Retrograde time. Sometimes a little patience exercised now will make your life a lot easier in the long run. If steps simply must be taken, it doesn't mean everything is doomed to failure...just keep duplicates, have backups, double-check everything, and be prepared for petty annoyances. The first appearance of a Retrograde Mercury during the period of this report occurs Jul 14, 2012 at 08:09 PM. Those conditions persist until Mercury again goes "Direct" sometime after the report period..

**Jul 15, 2012 - Tr. Sun Trine Sun**

Keywords: helpful identity supports your typical intellectually hungry personality.

**Jul 15, 2012 - Tr. Mars Sextile Saturn**

Keywords: spooky swordsmanship stimulates your normal collaborative integrity.

**Jul 17, 2012 - Tr. Mars Conjunction Venus**

Keywords: probing courage combines with your characteristic passionate relating.

**Jul 19, 2012 - Tr. Venus Trine Uranus**

Keywords: self-expressive relating supports your typical spooky autonomy.

**Jul 19, 2012 - Tr. Sun Trine Mercury**

Keywords: responsible personality enhances your usual work-oriented communication.

**Jul 20, 2012 - Tr. Sun Sextile Neptune**

Keywords: responsible identity excites your native self-protective contemplation.

**Jul 22, 2012 - Tr. Sun Trine Moon**

Keywords: supportive personality supports your typical work-oriented sensitivity.

**Jul 22, 2012 - Tr. Sun Opposite Ascendant**

The transiting Sun is like a huge, dumb battery. Whatever it touches, it electrifies -- but never for very long or very deeply. That's simply because it's a fast-moving factor, never staying anywhere long enough to develop true depth or complexity of meaning. In a year, it circuits the chart once...which leaves it only a few days to spend in each of your chart's many sensitive zones. Whatever it touches, however, is temporarily pushed into action. And sometimes, if more serious astro-psychological energies have been building or brewing in that area of your life, the Sun's transit over that point might just be the trigger that sets big wheels turning. The critical point is that the Sun represents your ego, and when it collides with sensitive territories you need to act accordingly: not "egocentrically," but with an awareness of your rights, your needs, and your desires.

Sun enters your Seventh House Jul 22, 2012. Traditionally the "House of Marriage," the Seventh House is actually a reference to anyone and everyone with whom you are open to intimacy. Whenever this part of the chart is stimulated, it's a signal that someone is coming into your life to adjust your attitude or your course, and that the adjustment is quite necessary and appropriate. Who is this person, and what is the message? We don't know exactly, but here's a clue: he, she, or it looks, feels, and sounds a lot like the Sun. One bottom line: the quality of your deepest human connections profoundly affects the quality of your life, and at least one of these human connections needs some attention during these days.

**Jul 24, 2012 - Tr. Venus Square Mars**

Keywords: child-like relating clashes with your instinctive spooky swordsmanship.

**Jul 26, 2012 - Tr. Sun Sextile Pluto**

Keywords: loving personality stimulates your normal psychologically sophisticated honesty.

**Jul 26, 2012 - Tr. Mercury Sextile Venus**

Keywords: collaborative communication excites your native spooky affection.

**Jul 28, 2012 - Tr. Mercury Conjunct Saturn**

Keywords: caring dialog fuses with your natural empathetic solitude.

**Jul 29, 2012 - Tr. Sun Conjunct Saturn**

Keywords: empathetic personality fuses with your natural collaborative composure.

**Jul 30, 2012 - Tr. Sun Sextile Venus**

Keywords: collaborative nature excites your native spooky human connection.

**Jul 30, 2012 at 08:41 AM - Tr. Moon enters Twelfth House**

This month, the transiting Moon crosses into your natal Twelfth House again Jul 30, 2012 at 08:41 AM. It emerges and a new emotional cycle begins Aug 01, 2012 at 04:13 AM. As we discussed earlier, this represents a brief period in which you serve your own ultimate interests best by relaxing a bit, taking some extra precautions against physical mishaps, and most importantly, delaying any major new starts, insofar as that's possible.

**Jul 30, 2012 - Tr. Mars Conjunct Uranus**

Keywords: probing courage combines with your characteristic psychologically deep individuality.

**Jul 31, 2012 - Tr. Mercury Sextile Pluto**

Keywords: cooperative dialog excites your native cautious investigation.

### August Invitation Peaks

**Aug 20, 2012 - Tr. Jupiter enters Fifth House**

### August Mean Peaks

**Aug 21, 2012 - Pr. Moon Trine Uranus**

### August The Details

**Aug 07, 2012 - Tr. Sun Sextile Uranus**

Keywords: loving personality stimulates your normal penetratingly real autonomy.

**Aug 09, 2012 - Tr. Sun Square Jupiter**

Keywords: collaborative identity clashes with your instinctive routine-shattering opportunity.

**Aug 14, 2012 - Tr. Mercury Sextile Pluto**

Keywords: collaborative dialog stimulates your normal sensitive investigation.

**Aug 15, 2012 - Tr. Sun Square Sun**

Keywords: loving personality clashes with your instinctive intellectually hungry identity.

**Aug 15, 2012 - Tr. Venus Square Venus**

Keywords: painstaking human connection conflicts with your instinctive probing relating.

**Aug 17, 2012 - Tr. Mercury Conjunct Saturn**

Keywords: interpersonally sensitive communication fuses with your natural empathetic solitude.

**Aug 18, 2012 - Tr. Mercury Sextile Venus**

Keywords: collaborative communication stimulates your normal psychologically deep human connection.

**Aug 20, 2012 - Tr. Sun Square Mercury**

Keywords: interpersonally sensitive personality conflicts with your instinctive career communication.

**Aug 21, 2012 - Tr. Sun Square Neptune**

Keywords: collaborative nature conflicts with your instinctive sensitive inspiration.

**Aug 22, 2012 - Tr. Sun Square Moon**

Keywords: empathetic nature clashes with your instinctive employment-oriented sensitivity.

**Aug 23, 2012 - Tr. Venus Square Uranus**

Keywords: responsible affection clashes with your instinctive psychologically deep originality.

**Aug 23, 2012 - Tr. Mercury Sextile Uranus**

Keywords: interpersonally sensitive communication excites your native psychologically deep autonomy.

**Aug 25, 2012 - Tr. Mercury Square Jupiter**

Keywords: collaborative conversation conflicts with your instinctive adventuresome gambling.

**Aug 25, 2012 - Tr. Venus Trine Jupiter**

Keywords: responsible affection supports your typical routine-shattering opportunity.

**Aug 26, 2012 at 03:21 PM - Tr. Moon enters Twelfth House**

This month, the transiting Moon crosses into your natal Twelfth House again Aug 26, 2012 at 03:21 PM. It emerges and a new emotional cycle begins Aug 28, 2012 at 11:56 AM. As we discussed earlier, this represents a brief period in which you serve your own ultimate interests best by relaxing a bit, taking some extra precautions against physical mishaps, and most importantly, delaying any major new starts, insofar as that's possible.

**Aug 26, 2012 - Tr. Venus Sextile Mars**

Keywords: dutiful affection excites your native spooky assertiveness.

**Aug 26, 2012 - Tr. Sun Square Pluto**

Keywords: collaborative nature clashes with your instinctive watchful investigation.

**Aug 28, 2012 - Tr. Mercury Square Sun**

Keywords: caring communication clashes with your instinctive exploratory nature.

**Aug 30, 2012 - Tr. Mercury Square Mercury**

Keywords: collaborative conversation clashes with your instinctive vocational dialog.

**Aug 30, 2012 - Tr. Venus Trine Sun**

Keywords: supportive relating enhances your usual exploratory nature.

**Aug 31, 2012 - Tr. Mercury Square Neptune**

Keywords: cooperative communication clashes with your instinctive cautious contemplation.

**Aug 31, 2012 - Tr. Mercury Square Moon**

Keywords: cooperative communication clashes with your instinctive on-the-job awareness.

### September Invitation Peaks

**Sep 03, 2012 - Tr. Uranus Opposite Venus**

**Sep 20, 2012 - Pr. Venus enters Pisces**

### September Mean Peaks

**Sep 08, 2012 - Tr. Jupiter Trine Uranus**

**Sep 29, 2012 - Tr. Uranus Trine Saturn**

### September The Details

**Sep 02, 2012 - Tr. Mars Square Saturn**

Keywords: routine-shattering courage clashes with your instinctive caring composure.

**Sep 03, 2012 - Tr. Mercury Square Pluto**

Keywords: loving communication clashes with your instinctive self-protective investigation.

**Sep 04, 2012 - Tr. Venus Trine Mercury**

Keywords: supportive relating supports your typical professional dialog.

**Sep 05, 2012 - Tr. Venus Sextile Neptune**

Keywords: responsible relating stimulates your normal cautious imagination.

**Sep 06, 2012 - Tr. Venus Trine Moon**

Keywords: helpful affection supports your typical career awareness.

**Sep 06, 2012 - Tr. Venus Opposite Ascendant**

Venus: Goddess of Love, Goddess of Peace...in her fast transits around your chart, she offers you counsel and support, sometimes through friendship, sometimes through more romantic kinds of intimacy. Her arrival at a sensitive zone also suggests that a time has come to relax and to receive solace or comfort, or to recharge your inner batteries through the perception of beauty. People come warmly into your space; a chance to "let your hair down" arises; paintings, music, and Technicolor sunsets abound.

Venus enters your Seventh House Sep 06, 2012. Traditionally the "House of Marriage," the Seventh House is actually a reference to anyone and everyone with whom you are open to intimacy. Whenever this part of the chart is stimulated, it's a signal that someone is coming into your life to adjust your attitude or your course, and that the adjustment is quite necessary and appropriate. Who is this person, and what is the message? We don't know exactly, but here's a clue: he, she, or it looks, feels, and sounds a lot like the Venus. One bottom line: the quality of your deepest human connections profoundly affects the quality of your life, and at least one of these human connections needs some attention during these days.

**Sep 09, 2012 - Tr. Sun Sextile Jupiter**

Keywords: probing personality stimulates your normal questing exuberance.

**Sep 10, 2012 - Tr. Mercury Sextile Jupiter**

Keywords: penetratingly real dialog excites your native exploratory exuberance.

**Sep 10, 2012 - Tr. Venus Sextile Pluto**

Keywords: loving relating excites your native sensitive investigation.

**Sep 10, 2012 - Tr. Mercury Conjunct Mars**

Keywords: probing communication fuses with your natural psychologically deep courage.

**Sep 10, 2012 - Tr. Sun Conjunct Mars**

Keywords: penetratingly real personality combines with your characteristic psychologically deep swordsmanship.

**Sep 12, 2012 - Tr. Venus Conjunct Saturn**

Keywords: empathetic human connection combines with your characteristic loving composure.

**Sep 12, 2012 - Tr. Mercury Sextile Sun**

Keywords: penetratingly real communication excites your native intellectually hungry personality.

**Sep 13, 2012 - Tr. Venus Sextile Venus**

Keywords: collaborative affection excites your native emotionally brave human connection.

**Sep 15, 2012 - Tr. Sun Sextile Sun**

Keywords: emotionally brave nature excites your native exploratory personality.

**Sep 15, 2012 - Tr. Mercury Sextile Mercury**

Keywords: emotionally brave communication excites your native vocational dialog.

**Sep 16, 2012 - Tr. Mercury Trine Neptune**

Keywords: emotionally brave dialog enhances your usual sensitive imagination.

**Sep 16, 2012 - Tr. Mercury Sextile Moon**

Keywords: penetratingly real communication excites your native vocational attitude.

**Sep 17, 2012 - Pluto goes Direct (at 06° Cp57' in your 12th House)**

Aspects: Square Venus.

**Sep 19, 2012 - Tr. Mercury Trine Pluto**

Keywords: spooky dialog enhances your usual sensitive investigation.

**Sep 19, 2012 - Tr. Mars Conjunct Jupiter**

Keywords: routine-shattering assertiveness fuses with your natural exploratory opportunity.

**Sep 20, 2012 - Tr. Sun Sextile Mercury**

Keywords: probing personality excites your native on-the-job dialog.

**Sep 20, 2012 - Tr. Venus Sextile Uranus**

Keywords: loving relating excites your native passionate originality.

**Sep 20, 2012 - Tr. Mercury Sextile Saturn**

Keywords: penetratingly real conversation excites your native interpersonally sensitive integrity.

**Sep 20, 2012 - Tr. Mars Sextile Mars**

Keywords: exploratory courage excites your native psychologically deep assertiveness.

**Sep 21, 2012 - Tr. Mercury Conjunct Venus**

Keywords: passionate communication fuses with your natural psychologically deep affection.

**Sep 21, 2012 - Tr. Sun Trine Neptune**

Keywords: psychologically deep identity supports your typical sensitive contemplation.

**Sep 22, 2012 - Tr. Sun Sextile Moon**

Keywords: emotionally brave nature stimulates your normal work-oriented sensitivity.

**Sep 22, 2012 - Tr. Venus Square Jupiter**

Keywords: empathetic affection clashes with your instinctive adventuresome opportunity.

**Sep 22, 2012 at 08:45 PM - Tr. Moon enters Twelfth House**

This month, the transiting Moon crosses into your natal Twelfth House again Sep 22, 2012 at 08:45 PM. It emerges and a new emotional cycle begins Sep 24, 2012 at 05:51 PM. As we discussed earlier, this represents a brief period in which you serve your own ultimate interests best by relaxing a bit, taking some extra precautions against physical mishaps, and most importantly, delaying any major new starts, insofar as that's possible.

**Sep 25, 2012 - Tr. Mercury Conjunct Uranus**

Keywords: probing dialog combines with your characteristic spooky individuality.

**Sep 26, 2012 - Tr. Sun Trine Pluto**

Keywords: penetratingly real nature enhances your usual cautious investigation.

**Sep 27, 2012 - Tr. Venus Square Sun**

Keywords: interpersonally sensitive relating conflicts with your instinctive intellectually hungry personality.

**Sep 27, 2012 - Tr. Mars Conjunct Sun**

Keywords: questing swordsmanship fuses with your natural routine-shattering identity.

**Sep 28, 2012 - Tr. Mars Conjunct Midheaven**

Mars, the God of War, is transiting through sensitive territories for you, suggesting some turbulent waters to be navigated. Always the trick with the red planet lies in realizing that the time has come to overcome a fear or a resistance in yourself, and to take what is legitimately yours. Your blood is up, and that's not a bad thing, unless you "chicken out" and misdirect the Martian energy toward some inappropriate target.

Mars arrives at a conjunction with your Midheaven Sep 28, 2012, and that always suggests a time of public visibility or career-related activity. The Midheaven is the top of the chart and corresponds to the most outward, visible parts of your life. It's an active point, generally not very subtle. To make the most of it, pretend that "all the world's a stage" and that the part you're playing is that of the Mars, as we just described it. Don't be shy. Ham it up a little, and make sure the people dozing in the back row don't miss any nuances.

**Sep 29, 2012 - Tr. Sun Sextile Saturn**

Keywords: penetratingly real identity stimulates your normal collaborative composure.

**Sep 30, 2012 - Tr. Sun Conjunct Venus**

Keywords: penetratingly real nature combines with your characteristic emotionally brave relating.

### October Invitation Peaks

**Oct 07, 2012 - Tr. Saturn Square Ascendant**

### October Mean Peaks

**Oct 29, 2012 - Tr. Jupiter Trine Uranus**



**October The Details****Oct 01, 2012 - Tr. Venus Square Mercury**

Keywords: collaborative affection conflicts with your instinctive career communication.

**Oct 02, 2012 - Tr. Venus Square Neptune**

Keywords: cooperative affection clashes with your instinctive self-protective inspiration.

**Oct 03, 2012 - Tr. Venus Square Moon**

Keywords: empathetic affection clashes with your instinctive vocational awareness.

**Oct 03, 2012 - Tr. Mars Conjunct Mercury**

Keywords: vocational swordsmanship fuses with your natural professional conversation.

**Oct 04, 2012 - Jupiter turns Retrograde (at 16°Ge23' in your 05th House)**

Aspects: Square Mars, Trine Uranus.

**Oct 05, 2012 - Tr. Mars Opposite Neptune**

Keywords: career assertiveness is in tension with your inherent cautious imagination.

**Oct 06, 2012 - Tr. Venus Square Pluto**

Keywords: caring human connection conflicts with your instinctive psychologically sophisticated honesty.

**Oct 07, 2012 - Tr. Mars Conjunct Moon**

Keywords: work-oriented courage combines with your characteristic employment-oriented attitude.

**Oct 07, 2012 - Tr. Sun Conjunct Uranus**

Keywords: probing personality combines with your characteristic passionate individuality.

**Oct 09, 2012 - Tr. Mercury Square Saturn**

Keywords: intellectually hungry communication clashes with your instinctive collaborative composure.

**Oct 12, 2012 - Tr. Mars Opposite Pluto**

Keywords: employment-oriented courage is in tension with your inherent cautious intensity.

**Oct 16, 2012 - Tr. Mars Trine Saturn**

Keywords: vocational swordsmanship enhances your usual collaborative integrity.

**Oct 17, 2012 - Tr. Mars Sextile Venus**

Keywords: career assertiveness stimulates your normal psychologically deep affection.

**Oct 18, 2012 - Tr. Mercury Conjunct Jupiter**

Keywords: questing communication fuses with your natural routine-shattering opportunity.

**Oct 18, 2012 - Tr. Venus Sextile Jupiter**

Keywords: probing relating excites your native questing opportunity.

**Oct 18, 2012 - Tr. Mercury Sextile Mars**

Keywords: adventuresome conversation excites your native emotionally brave swordsmanship.

**Oct 19, 2012 - Tr. Venus Conjunct Mars**

Keywords: emotionally brave relating fuses with your natural psychologically deep courage.

**Oct 20, 2012 at 02:55 AM - Tr. Moon enters Twelfth House**

This month, the transiting Moon crosses into your natal Twelfth House again Oct 20, 2012 at 02:55 AM. It emerges and a new emotional cycle begins Oct 21, 2012 at 11:21 PM. As we discussed earlier, this represents a brief period in which you serve your own ultimate interests best by relaxing a bit, taking some extra precautions against physical mishaps, and most importantly, delaying any major new starts, insofar as that's possible.

**Oct 22, 2012 - Tr. Mercury Conjunct Sun**

Keywords: exploratory dialog combines with your characteristic intellectually hungry personality.

**Oct 22, 2012 - Tr. Venus Sextile Sun**

Keywords: probing human connection stimulates your normal adventuresome identity.

**Oct 23, 2012 - Tr. Mercury Conjunct Midheaven**

The transiting Mercury surfaces again...this, as you may recall, is the harbinger of messages and new information to which you need to pay attention.

Mercury arrives at a conjunction with your Midheaven Oct 23, 2012, and that always suggests a time of public visibility or career-related activity. The Midheaven is the top of the chart and corresponds to the most outward, visible parts of your life. It's an active point, generally not very subtle. To make the most of it, pretend that "all the world's a stage" and that the part you're playing is that of the Mercury, as we just described it. Don't be shy. Ham it up a little, and make sure the people dozing in the back row don't miss any nuances.

**Oct 26, 2012 - Tr. Venus Sextile Mercury**

Keywords: spooky relating stimulates your normal professional dialog.

**Oct 26, 2012 - Tr. Mercury Conjunct Mercury**

Keywords: professional dialog combines with your characteristic employment-oriented conversation.

**Oct 27, 2012 - Tr. Venus Trine Neptune**

Keywords: probing human connection supports your typical cautious contemplation.

**Oct 27, 2012 - Tr. Mercury Opposite Neptune**

Keywords: employment-oriented dialog is in tension with your inherent sensitive imagination.

**Oct 28, 2012 - Tr. Mars Sextile Uranus**

Keywords: strategic courage stimulates your normal passionate autonomy.

**Oct 28, 2012 - Tr. Venus Sextile Moon**

Keywords: probing human connection stimulates your normal vocational attitude.

**Oct 29, 2012 - Tr. Mercury Conjunct Moon**

Keywords: career communication combines with your characteristic vocational awareness.

**Oct 29, 2012 - Tr. Sun Square Saturn**

Keywords: intellectually hungry nature conflicts with your instinctive collaborative integrity.

**Oct 31, 2012 - Tr. Venus Trine Pluto**

Keywords: penetratingly real relating supports your typical sensitive investigation.

### November Invitation Peaks

**Nov 04, 2012 - Tr. Pluto Square Venus**

**Nov 18, 2012 - Tr. Jupiter enters Fifth House**

**Nov 29, 2012 - Tr. Saturn Square Saturn**

### November Mean Peaks

(None this month.)

### November The Details

**Nov 01, 2012 - Tr. Mars Square Mars**

Keywords: visionary swordsmanship clashes with your instinctive probing courage.

**Nov 02, 2012 - Tr. Venus Sextile Saturn**

Keywords: spooky human connection stimulates your normal empathetic composure.

**Nov 03, 2012 - Tr. Venus Conjunct Venus**

Keywords: penetratingly real relating combines with your characteristic passionate affection.

**Nov 05, 2012 - Tr. Mercury Opposite Pluto**

Keywords: on-the-job communication is in tension with your inherent psychologically sophisticated investigation.

**Nov 06, 2012 at 04:56 PM - Mercury turns Retrograde**

Mercury is turning Retrograde again. We described this phenomenon earlier, and you might want to look back and review it. Basically, it's a good time to delay signing contracts, buying mechanical things, or attempting significant communications. Mercury turns Retrograde Nov 06, 2012 at 04:56 PM and remains that way until sometime after the report period..

**Nov 07, 2012 - Tr. Mercury Opposite Pluto**

Keywords: vocational communication is in tension with your inherent watchful investigation.

**Nov 09, 2012 - Tr. Sun Conjunct Jupiter**

Keywords: exploratory identity combines with your characteristic routine-shattering gambling.

**Nov 09, 2012 - Tr. Venus Conjunct Uranus**

Keywords: spooky relating combines with your characteristic penetratingly real originality.

**Nov 10, 2012 - Tr. Sun Sextile Mars**

Keywords: routine-shattering nature excites your native probing courage.

**Nov 10, 2012 - Neptune goes Direct (at 00°Pi22' in your 01st House)**

Aspects: Square Moon, Square Sun, Square Mercury, Square Neptune, Square Pluto, Square Midheaven.

**Nov 13, 2012 - Tr. Mercury Conjunct Moon**

Keywords: work-oriented conversation combines with your characteristic employment-oriented attitude.

**Nov 14, 2012 - Tr. Sun Conjunct Sun**

Keywords: expansive nature combines with your characteristic exploratory personality.

**Nov 15, 2012 - Tr. Mercury Opposite Neptune**

Keywords: employment-oriented conversation is in tension with your inherent sensitive inspiration.

**Nov 15, 2012 - Tr. Mercury Conjunct Mercury**

Keywords: on-the-job communication fuses with your natural employment-oriented conversation.

**Nov 15, 2012 - Tr. Sun Conjunct Midheaven**

The transiting Sun again -- this is the big searchlight that shines on each part of your chart in the course of a year, seeing if there's anything there that's just waiting for a little push...

Sun arrives at a conjunction with your Midheaven Nov 15, 2012, and that always suggests a time of public visibility or career-related activity. The Midheaven is the top of the chart and corresponds to the most outward, visible parts of your life. It's an active point, generally not very subtle. To make the most of it, pretend that "all the world's a stage" and that the part you're playing is that of the Sun, as we just described it. Don't be shy. Ham it up a little, and make sure the people dozing in the back row don't miss any nuances.

**Nov 16, 2012 at 11:34 AM - Tr. Moon enters Twelfth House**

This month, the transiting Moon crosses into your natal Twelfth House again Nov 16, 2012 at 11:34 AM. It emerges and a new emotional cycle begins Nov 18, 2012 at 06:28 AM. As we discussed earlier, this represents a brief period in which you serve your own ultimate interests best by relaxing a bit, taking some extra precautions against physical mishaps, and most importantly, delaying any major new starts, insofar as that's possible.

**Nov 18, 2012 - Tr. Mercury Conjunct Midheaven**

The transiting Mercury surfaces again...this, as you may recall, is the harbinger of messages and new information to which you need to pay attention.

Mercury arrives at a conjunction with your Midheaven Nov 18, 2012, and that always suggests a time of public visibility or career-related activity. The Midheaven is the top of the chart and corresponds to the most outward, visible parts of your life. It's an active point, generally not very subtle. To make the most of it, pretend that "all the world's a stage" and that the part you're playing is that of the Mercury, as we just described it. Don't be shy. Ham it up a little, and make sure the people dozing in the back row don't miss any nuances.

**Nov 19, 2012 - Tr. Mercury Conjunct Sun**

Keywords: adventuresome dialog fuses with your natural intellectually hungry personality.

**Nov 19, 2012 - Tr. Sun Conjunct Mercury**

Keywords: career identity combines with your characteristic professional dialog.

**Nov 20, 2012 - Tr. Sun Opposite Neptune**

Keywords: on-the-job identity is in tension with your inherent emotional contemplation.

**Nov 21, 2012 - Tr. Sun Conjunct Moon**

Keywords: on-the-job personality combines with your characteristic employment-oriented attitude.

**Nov 24, 2012 - Tr. Mercury Sextile Mars**

Keywords: routine-shattering dialog excites your native emotionally brave assertiveness.

**Nov 25, 2012 - Tr. Sun Opposite Pluto**

Keywords: work-oriented nature opposes your inborn sensitive honesty.

**Nov 26, 2012 - Tr. Mars Square Venus**

Keywords: private swordsmanship clashes with your instinctive passionate relating.

**Nov 27, 2012 - Tr. Venus Square Saturn**

Keywords: exploratory human connection conflicts with your instinctive interpersonally sensitive composure.

**Nov 28, 2012 - Tr. Sun Trine Saturn**

Keywords: professional personality enhances your usual collaborative composure.

**Nov 29, 2012 - Tr. Sun Sextile Venus**

Keywords: employment-oriented identity excites your native spooky affection.

**Nov 29, 2012 - Tr. Mercury Sextile Mars**

Keywords: adventuresome communication excites your native psychologically deep swordsmanship.

**December Invitation Peaks**

(None this month.)

**December Mean Peaks**

**Dec 06, 2012 - Pr. Moon Square Mars**

**December The Details****Dec 05, 2012 - Tr. Mercury Conjunct Sun**

Keywords: intellectually hungry dialog combines with your characteristic questing identity.

**Dec 06, 2012 - Tr. Mercury Conjunct Midheaven**

The transiting Mercury surfaces again...this, as you may recall, is the harbinger of messages and new information to which you need to pay attention.

The Mercury arrives at a conjunction with your Midheaven Dec 06, 2012, and that always suggests a time of public visibility or career-related activity. The Midheaven is the top of the chart and corresponds to the most outward, visible parts of your life. It's an active point, generally not very subtle. To make the most of it, pretend that "all the world's a stage" and that the part you're playing is that of the Mercury, as we just described it. Don't be shy. Ham it up a little, and make sure the people dozing in the back row don't miss any nuances.

**Dec 06, 2012 - Tr. Venus Conjunct Jupiter**

Keywords: exploratory relating combines with your characteristic expansive gambling.

**Dec 06, 2012 - Tr. Sun Sextile Uranus**

Keywords: group-dynamical identity stimulates your normal emotionally brave originality.

**Dec 06, 2012 - Tr. Mars Square Uranus**

Keywords: reclusive assertiveness clashes with your instinctive penetratingly real autonomy.

**Dec 06, 2012 - Tr. Venus Sextile Mars**

Keywords: exploratory affection excites your native probing courage.

**Dec 09, 2012 - Tr. Mercury Conjunct Mercury**

Keywords: career communication combines with your characteristic professional conversation.

**Dec 09, 2012 - Tr. Mercury Opposite Neptune**

Keywords: professional conversation opposes your inborn sensitive contemplation.

**Dec 10, 2012 - Tr. Mars Sextile Jupiter**

Keywords: reclusive swordsmanship excites your native questing opportunity.

**Dec 10, 2012 - Tr. Sun Square Mars**

Keywords: long-term personality conflicts with your instinctive probing swordsmanship.

**Dec 10, 2012 - Tr. Venus Conjunct Sun**

Keywords: routine-shattering human connection fuses with your natural intellectually hungry nature.

**Dec 10, 2012 - Tr. Mercury Conjunct Moon**

Keywords: vocational communication fuses with your natural employment-oriented awareness.

**Dec 11, 2012 - Tr. Venus Conjunct Midheaven**

The transiting Venus emerges again, suggesting experiences coming to you centered on other people with whom you are involved, and also encouraging you to relax and release tension now, perhaps with the help of music, art, or natural beauty.

The Venus arrives at a conjunction with your Midheaven Dec 11, 2012, and that always suggests a time of public visibility or career-related activity. The Midheaven is the top of the chart and corresponds to the most outward, visible parts of your life. It's an active point, generally not very subtle. To make the most of it, pretend that "all the world's a stage" and that the part you're playing is that of the Venus, as we just described it. Don't be shy. Ham it up a little, and make sure the people dozing in the back row don't miss any nuances.

**Dec 11, 2012 - Tr. Mars Trine Mars**

Keywords: private swordsmanship supports your typical penetratingly real assertiveness.

**Dec 13, 2012 - Uranus goes Direct (at 04°Ar37' in your 02nd House)**

Aspects: Trine Moon, Trine Mercury, Opposite Venus, Trine Saturn, Sextile Pluto, Sextile Ascendant.

**Dec 13, 2012 at 10:32 PM - Tr. Moon enters Twelfth House**

This month, the transiting Moon crosses into your natal Twelfth House again Dec 13, 2012 at 10:32 PM. It emerges and a new emotional cycle begins Dec 15, 2012 at 04:09 PM. As we discussed earlier, this represents a brief period in which you serve your own ultimate interests best by relaxing a bit, taking some extra precautions against physical mishaps, and most importantly, delaying any major new starts, insofar as that's possible.

**Dec 13, 2012 - Tr. Mercury Opposite Pluto**

Keywords: employment-oriented dialog opposes your inborn emotional honesty.

**Dec 14, 2012 - Tr. Venus Conjunct Mercury**

Keywords: employment-oriented human connection fuses with your natural on-the-job dialog.

**Dec 14, 2012 - Tr. Venus Opposite Neptune**

Keywords: work-oriented human connection opposes your inborn watchful contemplation.

**Dec 15, 2012 - Tr. Mercury Trine Saturn**

Keywords: employment-oriented conversation supports your typical empathetic composure.

**Dec 16, 2012 - Tr. Venus Conjunct Moon**

Keywords: career human connection combines with your characteristic vocational sensitivity.

**Dec 16, 2012 - Tr. Mercury Sextile Venus**

Keywords: employment-oriented dialog stimulates your normal psychologically deep human connection.

**Dec 17, 2012 - Tr. Mars Sextile Sun**

Keywords: meditative courage excites your native routine-shattering nature.

**Dec 19, 2012 - Tr. Venus Opposite Pluto**

Keywords: work-oriented affection is in tension with your inherent self-protective honesty.

**Dec 21, 2012 - Tr. Venus Trine Saturn**

Keywords: vocational human connection supports your typical empathetic composure.

**Dec 21, 2012 - Tr. Mercury Sextile Uranus**

Keywords: long-term communication stimulates your normal probing autonomy.

**Dec 21, 2012 - Tr. Venus Sextile Venus**

Keywords: vocational human connection excites your native emotionally brave affection.

**Dec 22, 2012 - Tr. Mars Sextile Mercury**

Keywords: quiet courage excites your native on-the-job dialog.

**Dec 23, 2012 - Tr. Mercury Square Mars**

Keywords: visionary conversation conflicts with your instinctive psychologically deep assertiveness.

**Dec 24, 2012 - Tr. Mars Trine Neptune**

Keywords: meditative assertiveness supports your typical psychologically sophisticated imagination.

**Dec 25, 2012 - Tr. Mars Sextile Moon**

Keywords: quiet assertiveness excites your native work-oriented awareness.

**Dec 25, 2012 - Tr. Mars Conjunct Ascendant**

The transiting Mars strikes again, implying that once more you find yourself in a brief season of assertiveness. Some conflict, inner or outer, requires working out, and now is the time...lest you become tense, argumentative, and difficult.

Mars arrives at a conjunction with your Ascendant Dec 25, 2012, and that always suggests a colorful, active few days. A new cycle of experience is beginning for you. It's not earth-shaking in its implications, but you'll be happier if you act positively in the spirit of the Mars. The ball is in your court. Decisive action, imprudent action, or inaction on your part now will have long-term effects, just as the experiences of childhood leave their mark on the adult character.



Don't be afraid of a little apparent selfishness now. There are seasons of giving and seasons of taking; this one is for taking.

**Dec 28, 2012 - Tr. Venus Sextile Uranus**

Keywords: group-dynamical affection stimulates your normal emotionally brave originality.

**Dec 28, 2012 - Tr. Sun Square Venus**

Keywords: reclusive identity clashes with your instinctive probing affection.

**Dec 31, 2012 - Tr. Venus Square Mars**

Keywords: priority-clarifying relating conflicts with your instinctive psychologically deep swordsmanship.

**Dec 31, 2012 - Tr. Mars Trine Pluto**

Keywords: assertive swordsmanship supports your typical psychologically sophisticated investigation.

**January Invitation Peaks**

(None this month.)

**January Mean Peaks**

**Jan 03, 2013 - Tr. Jupiter Trine Venus**

**Jan 19, 2013 - Tr. Jupiter Sextile Saturn**

**January The Details**

**Jan 03, 2013 - Tr. Mars Opposite Saturn**

Keywords: forceful courage is in tension with your inherent caring integrity.

**Jan 04, 2013 - Tr. Mars Trine Venus**

Keywords: assertive assertiveness supports your typical emotionally brave human connection.

**Jan 05, 2013 - Tr. Mercury Square Venus**

Keywords: withdrawn communication clashes with your instinctive probing affection.

**Jan 05, 2013 - Tr. Sun Square Uranus**

Keywords: reclusive nature conflicts with your instinctive probing individuality.

**Jan 07, 2013 - Tr. Sun Sextile Jupiter**

Keywords: private personality stimulates your normal adventuresome exuberance.

**Jan 08, 2013 - Tr. Sun Trine Mars**

Keywords: reclusive personality supports your typical psychologically deep swordsmanship.

**Jan 10, 2013 - Tr. Mercury Square Uranus**

Keywords: meditative conversation conflicts with your instinctive passionate individuality.

**Jan 10, 2013 at 09:47 AM - Tr. Moon enters Twelfth House**

This month, the transiting Moon crosses into your natal Twelfth House again Jan 10, 2013 at 09:47 AM. It emerges and a new emotional cycle begins Jan 12, 2013 at 03:18 AM. As we discussed earlier, this represents a brief period in which you serve your own ultimate interests best by relaxing a bit, taking some extra precautions against physical mishaps, and most importantly, delaying any major new starts, insofar as that's possible.

**Jan 11, 2013 - Tr. Mercury Sextile Jupiter**

Keywords: private communication stimulates your normal questing opportunity.

**Jan 12, 2013 - Tr. Mercury Trine Mars**

Keywords: withdrawn conversation enhances your usual psychologically deep swordsmanship.

**Jan 12, 2013 - Tr. Sun Sextile Sun**

Keywords: reclusive identity excites your native expansive personality.

**Jan 14, 2013 - Tr. Mars Trine Uranus**

Keywords: forceful swordsmanship supports your typical penetratingly real originality.

**Jan 14, 2013 - Tr. Venus Square Venus**

Keywords: private human connection clashes with your instinctive penetratingly real affection.

**Jan 14, 2013 - Tr. Mercury Sextile Sun**

Keywords: quiet conversation stimulates your normal intellectually hungry nature.

**Jan 17, 2013 - Tr. Sun Sextile Mercury**

Keywords: meditative nature excites your native on-the-job conversation.

**Jan 17, 2013 - Tr. Mars Square Jupiter**

Keywords: authoritative assertiveness conflicts with your instinctive routine-shattering gambling.

**Jan 17, 2013 - Tr. Mercury Sextile Mercury**

Keywords: meditative dialog excites your native professional conversation.

**Jan 18, 2013 - Tr. Mercury Trine Neptune**

Keywords: spiritually open communication enhances your usual watchful contemplation.

**Jan 18, 2013 - Tr. Sun Trine Neptune**

Keywords: private nature supports your typical self-protective imagination.

**Jan 19, 2013 - Tr. Mercury Sextile Moon**

Keywords: withdrawn dialog stimulates your normal career awareness.

**Jan 19, 2013 - Tr. Mercury Conjunct Ascendant**

The transiting Mercury surfaces again...this, as you may recall, is the harbinger of messages and new information to which you need to pay attention.

Mercury arrives at a conjunction with your Ascendant Jan 19, 2013, and that always suggests a colorful, active few days. A new cycle of experience is beginning for you. It's not earth-shaking in its implications, but you'll be happier if you act positively in the spirit of the Mercury. The ball is in your court. Decisive action, imprudent action, or inaction on your part now will have long-term effects, just as the experiences of childhood leave their mark on the adult character. Don't be afraid of a little apparent selfishness now. There are seasons of giving and seasons of taking; this one is for taking.

**Jan 19, 2013 - Tr. Sun Sextile Moon**

Keywords: reclusive identity excites your native work-oriented awareness.

**Jan 19, 2013 - Tr. Sun Conjunct Ascendant**

The transiting Sun again -- this is the big searchlight that shines on each part of your chart in the course of a year, seeing if there's anything there that's just waiting for a little push...

The Sun arrives at a conjunction with your Ascendant Jan 19, 2013, and that always suggests a colorful, active few days. A new cycle of experience is beginning for you. It's not earth-shaking in its implications, but you'll be happier if you act positively in the spirit of the Sun. The ball is in your court. Decisive action, imprudent action, or inaction on your part now will have long-term effects, just as the experiences of childhood leave their mark on the adult character. Don't be afraid of a little apparent selfishness now. There are seasons of giving and seasons of taking; this one is for taking.

**Jan 21, 2013 - Tr. Venus Square Uranus**

Keywords: meditative relating conflicts with your instinctive penetratingly real autonomy.

**Jan 21, 2013 - Tr. Mercury Trine Pluto**

Keywords: decisive conversation supports your typical self-protective intensity.

**Jan 22, 2013 - Tr. Mercury Opposite Saturn**

Keywords: resolute conversation is in tension with your inherent loving composure.

**Jan 23, 2013 - Tr. Venus Sextile Jupiter**

Keywords: meditative human connection stimulates your normal expansive gambling.

**Jan 23, 2013 - Tr. Mercury Trine Venus**

Keywords: assertive communication supports your typical passionate human connection.

**Jan 23, 2013 - Tr. Sun Trine Pluto**

Keywords: assertive nature enhances your usual self-protective honesty.

**Jan 23, 2013 - Tr. Venus Trine Mars**

Keywords: quiet affection supports your typical emotionally brave courage.

**Jan 24, 2013 - Tr. Mars Square Sun**

Keywords: resolute swordsmanship conflicts with your instinctive exploratory identity.

**Jan 26, 2013 - Tr. Sun Opposite Saturn**

Keywords: resolute identity opposes your inborn empathetic solitude.

**Jan 27, 2013 - Tr. Sun Trine Venus**

Keywords: assertive identity supports your typical probing human connection.

**Jan 27, 2013 - Tr. Venus Sextile Sun**

Keywords: quiet human connection excites your native exploratory nature.

**Jan 27, 2013 - Tr. Mercury Trine Uranus**

Keywords: decisive dialog supports your typical passionate individuality.

**Jan 29, 2013 - Tr. Mercury Square Jupiter**

Keywords: authoritative dialog conflicts with your instinctive expansive exuberance.

**Jan 30, 2013 - Tr. Mars Square Mercury**

Keywords: assertive swordsmanship conflicts with your instinctive work-oriented conversation.

**Jan 30, 2013 - Jupiter goes Direct (at 06°Ge20' in your 04th House)**

Aspects: Opposite Moon, Trine Venus, Sextile Saturn, Conjunct Neptune, Conjunct Pluto, Trine Ascendant.

**Jan 31, 2013 - Tr. Venus Sextile Mercury**

Keywords: withdrawn affection excites your native vocational communication.

**Jan 31, 2013 - Tr. Mars Square Neptune**

Keywords: resolute assertiveness conflicts with your instinctive cautious imagination.

**Jan 31, 2013 - Tr. Venus Trine Neptune**

Keywords: spiritually open human connection supports your typical cautious contemplation.

**February Invitation Peaks**

(None this month.)

**February Mean Peaks**

**Feb 10, 2013 - Tr. Jupiter Sextile Saturn**

**Feb 20, 2013 - Tr. Uranus Trine Saturn**

**Feb 26, 2013 - Tr. Jupiter Trine Venus**

### February The Details

**Feb 01, 2013 - Tr. Mercury Square Sun**

Keywords: resolute communication clashes with your instinctive exploratory nature.

**Feb 01, 2013 - Tr. Venus Sextile Moon**

Keywords: withdrawn affection excites your native employment-oriented sensitivity.

**Feb 01, 2013 - Tr. Mars Square Moon**

Keywords: assertive courage clashes with your instinctive on-the-job sensitivity.

**Feb 01, 2013 - Tr. Venus Conjunct Ascendant**

The transiting Venus emerges again, suggesting experiences coming to you centered on other people with whom you are involved, and also encouraging you to relax and release tension now, perhaps with the help of music, art, or natural beauty.

The Venus arrives at a conjunction with your Ascendant Feb 01, 2013, and that always suggests a colorful, active few days. A new cycle of experience is beginning for you. It's not earth-shaking in its implications, but you'll be happier if you act positively in the spirit of the Venus. The ball is in your court. Decisive action, imprudent action, or inaction on your part now will have long-term effects, just as the experiences of childhood leave their mark on the adult character. Don't be afraid of a little apparent selfishness now. There are seasons of giving and seasons of taking; this one is for taking.

**Feb 03, 2013 - Tr. Sun Trine Uranus**

Keywords: decisive personality enhances your usual psychologically deep autonomy.

**Feb 04, 2013 - Tr. Mercury Square Mercury**

Keywords: assertive communication clashes with your instinctive employment-oriented conversation.

**Feb 04, 2013 - Tr. Mercury Square Neptune**

Keywords: resolute conversation conflicts with your instinctive emotional contemplation.

**Feb 05, 2013 - Tr. Venus Trine Pluto**

Keywords: forceful relating enhances your usual emotional intensity.

**Feb 05, 2013 - Tr. Mercury Square Moon**

Keywords: resolute communication clashes with your instinctive work-oriented awareness.

**Feb 06, 2013 - Tr. Sun Square Jupiter**

Keywords: decisive personality clashes with your instinctive questing gambling.

**Feb 06, 2013 at 07:02 PM - Tr. Moon enters Twelfth House**

This month, the transiting Moon crosses into your natal Twelfth House again Feb 06, 2013 at 07:02 PM. It emerges and a new emotional cycle begins Feb 08, 2013 at 01:34 PM. As we discussed earlier, this represents a brief period in which you serve your own ultimate interests best by relaxing a bit, taking some extra precautions against physical mishaps, and most importantly, delaying any major new starts, insofar as that's possible.

**Feb 07, 2013 - Tr. Venus Opposite Saturn**

Keywords: assertive relating is in tension with your inherent empathetic composure.

**Feb 07, 2013 - Tr. Mars Square Pluto**

Keywords: authoritative swordsmanship clashes with your instinctive emotional honesty.

**Feb 07, 2013 - Tr. Mercury Square Pluto**

Keywords: decisive communication conflicts with your instinctive self-protective investigation.

**Feb 07, 2013 - Tr. Venus Trine Venus**

Keywords: resolute relating enhances your usual passionate human connection.

**Feb 11, 2013 - Tr. Sun Square Sun**

Keywords: decisive identity conflicts with your instinctive routine-shattering personality.

**Feb 14, 2013 - Tr. Venus Trine Uranus**

Keywords: authoritative relating enhances your usual probing autonomy.

**Feb 16, 2013 - Tr. Sun Square Mercury**

Keywords: commanding personality clashes with your instinctive career dialog.

**Feb 16, 2013 - Tr. Venus Square Jupiter**

Keywords: forceful relating conflicts with your instinctive expansive opportunity.

**Feb 17, 2013 - Tr. Sun Square Neptune**

Keywords: authoritative personality conflicts with your instinctive emotional inspiration.

**Feb 18, 2013 - Tr. Mercury Trine Jupiter**

Keywords: financially savvy dialog enhances your usual expansive opportunity.

**Feb 18, 2013 - Tr. Sun Square Moon**

Keywords: assertive nature clashes with your instinctive employment-oriented sensitivity.

**Feb 18, 2013 - Saturn turns Retrograde (at 11°Sc32' in your 09th House)**

Aspects: Conjunct Jupiter, Square Saturn.

**Feb 19, 2013 - Tr. Mercury Opposite Mars**

Keywords: self-confident communication is in tension with your inherent spooky swordsmanship.

**Feb 20, 2013 - Tr. Venus Square Sun**

Keywords: commanding human connection conflicts with your instinctive intellectually hungry identity.

**Feb 22, 2013 - Tr. Sun Square Pluto**

Keywords: decisive identity clashes with your instinctive self-protective intensity.

**Feb 23, 2013 at 03:42 AM - Mercury turns Retrograde**

Mercury is turning Retrograde again. We described this phenomenon earlier, and you might want to look back and review it. Basically, it's a good time to delay signing contracts, buying mechanical things, or attempting significant communications. Mercury turns Retrograde Feb

23, 2013 at 03:42 AM and remains that way until sometime after the report period..

**Feb 24, 2013 - Tr. Venus Square Mercury**

Keywords: decisive affection clashes with your instinctive employment-oriented conversation.

**Feb 24, 2013 - Tr. Mars Trine Jupiter**

Keywords: resourceful swordsmanship enhances your usual routine-shattering opportunity.

**Feb 24, 2013 - Tr. Venus Square Neptune**

Keywords: decisive human connection clashes with your instinctive cautious inspiration.

**Feb 25, 2013 - Tr. Mars Opposite Mars**

Keywords: financially savvy assertiveness is in tension with your inherent spooky courage.

**Feb 25, 2013 - Tr. Venus Square Moon**

Keywords: assertive human connection conflicts with your instinctive on-the-job sensitivity.

**Feb 26, 2013 - Tr. Mercury Opposite Mars**

Keywords: financially savvy communication opposes your inborn spooky courage.

**Feb 28, 2013 - Tr. Mercury Trine Jupiter**

Keywords: self-respecting communication enhances your usual expansive opportunity.

**March Invitation Peaks**

**Mar 11, 2013 - Tr. Uranus Opposite Venus**

**March Mean Peaks**

**(None this month.)**

**March The Details**

**Mar 01, 2013 - Tr. Venus Square Pluto**

Keywords: decisive affection conflicts with your instinctive self-protective honesty.

**Mar 03, 2013 - Tr. Mars Trine Sun**

Keywords: self-respecting courage enhances your usual routine-shattering identity.

**Mar 06, 2013 at 01:32 AM - Tr. Moon enters Twelfth House**

This month, the transiting Moon crosses into your natal Twelfth House again Mar 06, 2013 at 01:32 AM. It emerges and a new emotional cycle begins Mar 07, 2013 at 09:20 PM. As we

discussed earlier, this represents a brief period in which you serve your own ultimate interests best by relaxing a bit, taking some extra precautions against physical mishaps, and most importantly, delaying any major new starts, insofar as that's possible.

**Mar 08, 2013 - Tr. Sun Trine Jupiter**

Keywords: financially savvy nature supports your typical adventuresome exuberance.

**Mar 09, 2013 - Tr. Sun Opposite Mars**

Keywords: dignified personality opposes your inborn passionate assertiveness.

**Mar 09, 2013 - Tr. Mars Trine Mercury**

Keywords: self-respecting swordsmanship supports your typical work-oriented communication.

**Mar 10, 2013 - Tr. Mars Sextile Neptune**

Keywords: self-assured swordsmanship stimulates your normal cautious imagination.

**Mar 12, 2013 - Tr. Venus Trine Jupiter**

Keywords: self-confident relating enhances your usual exploratory opportunity.

**Mar 12, 2013 - Tr. Mars Trine Moon**

Keywords: dignified courage enhances your usual career attitude.

**Mar 12, 2013 - Tr. Venus Opposite Mars**

Keywords: self-assured affection is in tension with your inherent probing assertiveness.

**Mar 13, 2013 - Tr. Sun Trine Sun**

Keywords: resourceful personality enhances your usual adventuresome identity.

**Mar 16, 2013 - Tr. Venus Trine Sun**

Keywords: self-assured human connection enhances your usual adventuresome nature.

**Mar 17, 2013 - Tr. Mars Sextile Pluto**

Keywords: resourceful courage stimulates your normal psychologically sophisticated intensity.

**Mar 17, 2013 - Tr. Sun Trine Mercury**

Keywords: financially savvy identity supports your typical career dialog.

**Mar 19, 2013 - Tr. Sun Sextile Neptune**

Keywords: self-confident identity stimulates your normal emotional contemplation.

**Mar 20, 2013 - Tr. Venus Trine Mercury**

Keywords: self-assured relating supports your typical work-oriented conversation.

**Mar 20, 2013 - Tr. Sun Trine Moon**

Keywords: self-respecting identity supports your typical work-oriented attitude.

**Mar 20, 2013 - Tr. Mars Trine Saturn**

Keywords: self-confident swordsmanship enhances your usual cooperative solitude.

**Mar 20, 2013 - Tr. Venus Sextile Neptune**

Keywords: financially savvy relating stimulates your normal sensitive imagination.



**Mar 21, 2013 - Tr. Mars Opposite Venus**

Keywords: self-confident courage opposes your inborn spooky affection.

**Mar 21, 2013 - Tr. Venus Trine Moon**

Keywords: self-respecting relating supports your typical employment-oriented awareness.

**Mar 24, 2013 - Tr. Sun Sextile Pluto**

Keywords: resourceful personality excites your native emotional intensity.

**Mar 25, 2013 - Tr. Venus Sextile Pluto**

Keywords: self-respecting affection excites your native self-protective honesty.

**Mar 26, 2013 - Tr. Sun Trine Saturn**

Keywords: financially savvy nature enhances your usual caring integrity.

**Mar 27, 2013 - Tr. Venus Trine Saturn**

Keywords: self-assured relating enhances your usual loving solitude.

**Mar 27, 2013 - Tr. Sun Opposite Venus**

Keywords: financially savvy personality is in tension with your inherent penetratingly real relating.

**Mar 27, 2013 - Tr. Venus Opposite Venus**

Keywords: dignified human connection is in tension with your inherent passionate affection.

**Mar 31, 2013 - Tr. Mars Opposite Uranus**

Keywords: resourceful assertiveness opposes your inborn psychologically deep originality.

### April Invitation Peaks

**Apr 01, 2013 - Tr. Neptune Square Pluto**

**Apr 08, 2013 - Tr. Jupiter enters Fifth House**

**Apr 22, 2013 - Pr. Sun Trine Moon**

### April Mean Peaks

**Apr 19, 2013 - Tr. Jupiter Trine Uranus**

---

### April The Details

**Apr 02, 2013 at 06:53 AM - Tr. Moon enters Twelfth House**

This month, the transiting Moon crosses into your natal Twelfth House again Apr 02, 2013 at 06:53 AM. It emerges and a new emotional cycle begins Apr 04, 2013 at 02:59 AM. As we discussed earlier, this represents a brief period in which you serve your own ultimate interests best by relaxing a bit, taking some extra precautions against physical mishaps, and most importantly, delaying any major new starts, insofar as that's possible.

**Apr 03, 2013 - Tr. Venus Opposite Uranus**

Keywords: financially savvy human connection is in tension with your inherent emotionally brave individuality.

**Apr 04, 2013 - Tr. Mercury Trine Jupiter**

Keywords: dignified conversation enhances your usual expansive gambling.

**Apr 04, 2013 - Tr. Sun Opposite Uranus**

Keywords: self-assured identity is in tension with your inherent psychologically deep originality.

**Apr 05, 2013 - Tr. Mercury Opposite Mars**

Keywords: resourceful communication opposes your inborn psychologically deep swordsmanship.

**Apr 08, 2013 - Tr. Mercury Trine Sun**

Keywords: resourceful dialog enhances your usual adventuresome identity.

**Apr 12, 2013 - Tr. Mercury Trine Mercury**

Keywords: self-assured conversation enhances your usual work-oriented communication.

**Apr 12, 2013 - Pluto turns Retrograde (at 11° Cp35' in your 12th House)**

Aspects: Square Venus, Trine Mars, Square Uranus.

**Apr 13, 2013 - Tr. Mercury Sextile Neptune**

Keywords: self-respecting conversation stimulates your normal self-protective contemplation.

**Apr 13, 2013 - Tr. Mercury Trine Moon**

Keywords: self-assured conversation supports your typical work-oriented sensitivity.

**Apr 16, 2013 - Tr. Mercury Sextile Pluto**

Keywords: self-confident communication stimulates your normal watchful intensity.

**Apr 18, 2013 - Tr. Mercury Trine Saturn**

Keywords: self-respecting conversation enhances your usual loving composure.

**Apr 18, 2013 - Tr. Mercury Opposite Venus**

Keywords: self-confident communication opposes your inborn passionate affection.

**Apr 20, 2013 - Tr. Venus Square Saturn**

Keywords: open-minded relating conflicts with your instinctive interpersonally sensitive composure.

**Apr 23, 2013 - Tr. Mercury Opposite Uranus**

Keywords: self-respecting dialog is in tension with your inherent psychologically deep originality.

**Apr 26, 2013 - Tr. Sun Square Saturn**

Keywords: clever nature clashes with your instinctive caring solitude.

**Apr 28, 2013 - Tr. Mars Square Saturn**

Keywords: intelligent courage conflicts with your instinctive empathetic composure.

**Apr 29, 2013 - Tr. Venus Opposite Jupiter**

Keywords: intelligent relating opposes your inborn exploratory gambling.

**Apr 29, 2013 at 01:26 PM - Tr. Moon enters Twelfth House**

This month, the transiting Moon crosses into your natal Twelfth House again Apr 29, 2013 at 01:26 PM. It emerges and a new emotional cycle begins May 01, 2013 at 08:37 AM. As we discussed earlier, this represents a brief period in which you serve your own ultimate interests best by relaxing a bit, taking some extra precautions against physical mishaps, and most importantly, delaying any major new starts, insofar as that's possible.

**Apr 30, 2013 - Tr. Venus Trine Mars**

Keywords: clever relating supports your typical psychologically deep swordsmanship.

### May Invitation Peaks

**May 03, 2013 - Tr. Neptune enters Second House**

**May 15, 2013 - Pr. Sun Sextile Ascendant**

**May 21, 2013 - Tr. Saturn Square Saturn**

### May Mean Peaks

**May 07, 2013 - Tr. Jupiter Square Mars**

### May The Details

**May 03, 2013 - Tr. Venus Opposite Sun**

Keywords: intelligent human connection opposes your inborn questing identity.

**May 04, 2013 - Tr. Venus Opposite Midheaven**

The transiting Venus emerges again, suggesting experiences coming to you centered on other people with whom you are involved, and also encouraging you to relax and release tension now, perhaps with the help of music, art, or natural beauty.

Venus aligns with your Fourth House cusp, the very bottom of your birthchart, May 04, 2013. As you might imagine, this point, being buried, represents inward, psychological experience, and often puts emphasis on the home or family. Claim renewal for yourself now, and hold quiet counsel with yourself. Don't let the pressure of events drive you faster than is good for you; you don't need rest so much now as active silence. Vision is rising up in you, if you let it. To attune yourself to this new enlivening, get away from society; be alone, or be with people in your own inner circle -- your real "family" -- and do it in the spirit of the Venus. That will put you in the proper attitude of receptivity.

**May 04, 2013 - Tr. Mercury Square Saturn**

Keywords: open-minded dialog clashes with your instinctive caring solitude.

**May 07, 2013 - Tr. Venus Opposite Mercury**

Keywords: cautious human connection opposes your inborn career communication.

**May 08, 2013 - Tr. Sun Opposite Jupiter**

Keywords: clever nature is in tension with your inherent expansive opportunity.

**May 08, 2013 - Tr. Venus Conjunct Neptune**

Keywords: psychologically sophisticated relating fuses with your natural cautious contemplation.

**May 09, 2013 - Tr. Sun Trine Mars**

Keywords: intelligent personality supports your typical penetratingly real assertiveness.

**May 09, 2013 - Tr. Venus Opposite Moon**

Keywords: psychologically sophisticated human connection is in tension with your inherent career sensitivity.

**May 10, 2013 - Tr. Mercury Opposite Jupiter**

Keywords: intelligent dialog is in tension with your inherent routine-shattering exuberance.

**May 10, 2013 - Tr. Mercury Trine Mars**

Keywords: intelligent communication enhances your usual probing courage.

**May 12, 2013 - Tr. Mercury Opposite Sun**

Keywords: inventive communication is in tension with your inherent routine-shattering personality.

**May 12, 2013 - Tr. Venus Conjunct Pluto**

Keywords: watchful affection fuses with your natural emotional honesty.

**May 12, 2013 - Tr. Mercury Opposite Midheaven**

The transiting Mercury surfaces again...this, as you may recall, is the harbinger of messages and new information to which you need to pay attention.

The Mercury aligns with your Fourth House cusp, the very bottom of your birthchart, May 12, 2013. As you might imagine, this point, being buried, represents inward, psychological experience, and often puts emphasis on the home or family. Claim renewal for yourself now, and hold quiet counsel with yourself. Don't let the pressure of events drive you faster than is good for you; you don't need rest so much now as active silence. Vision is rising up in you, if you let it. To attune yourself to this new enlivening, get away from society; be alone, or be with people in your own inner circle -- your real "family" -- and do it in the spirit of the Mercury. That will put you in the proper attitude of receptivity.

**May 13, 2013 - Tr. Sun Opposite Sun**

Keywords: open-minded nature opposes your inborn adventuresome identity.

**May 14, 2013 - Tr. Mars Opposite Jupiter**

Keywords: open-minded courage is in tension with your inherent expansive gambling.

**May 14, 2013 - Tr. Sun Opposite Midheaven**

The transiting Sun again -- this is the big searchlight that shines on each part of your chart in the course of a year, seeing if there's anything there that's just waiting for a little push...

The Sun aligns with your Fourth House cusp, the very bottom of your birthchart, May 14, 2013. As you might imagine, this point, being buried, represents inward, psychological experience, and often puts emphasis on the home or family. Claim renewal for yourself now, and hold quiet counsel with yourself. Don't let the pressure of events drive you faster than is good for you; you don't need rest so much now as active silence. Vision is rising up in you, if you let it. To attune yourself to this new enlivening, get away from society; be alone, or be with people in your own inner circle -- your real "family" -- and do it in the spirit of the Sun. That will put you in the proper attitude of receptivity.

**May 14, 2013 - Tr. Mercury Opposite Mercury**

Keywords: emotional communication is in tension with your inherent professional dialog.

**May 14, 2013 - Tr. Venus Sextile Saturn**

Keywords: watchful affection excites your native interpersonally sensitive solitude.

**May 15, 2013 - Tr. Mercury Conjunct Neptune**

Keywords: watchful dialog fuses with your natural cautious imagination.

**May 15, 2013 - Tr. Venus Trine Venus**

Keywords: emotional affection enhances your usual psychologically deep relating.

**May 15, 2013 - Tr. Mercury Opposite Moon**

Keywords: watchful communication is in tension with your inherent work-oriented attitude.

**May 15, 2013 - Tr. Mars Trine Mars**

Keywords: intelligent courage supports your typical spooky assertiveness.

**May 17, 2013 - Tr. Mercury Conjunct Pluto**

Keywords: psychologically sophisticated dialog fuses with your natural watchful honesty.

**May 18, 2013 - Tr. Sun Opposite Mercury**

Keywords: watchful identity opposes your inborn vocational conversation.

**May 18, 2013 - Tr. Mercury Sextile Saturn**

Keywords: self-protective dialog excites your native empathetic integrity.

**May 19, 2013 - Tr. Mercury Trine Venus**

Keywords: sensitive communication supports your typical psychologically deep human connection.

**May 19, 2013 - Tr. Sun Conjunct Neptune**

Keywords: sensitive identity fuses with your natural watchful imagination.

**May 20, 2013 - Tr. Sun Opposite Moon**

Keywords: emotional identity opposes your inborn employment-oriented awareness.

**May 21, 2013 - Tr. Mars Opposite Sun**

Keywords: clever swordsmanship opposes your inborn intellectually hungry personality.

**May 21, 2013 - Tr. Venus Trine Uranus**

Keywords: creative human connection supports your typical emotionally brave autonomy.

**May 22, 2013 - Tr. Mercury Trine Uranus**

Keywords: child-like dialog enhances your usual penetratingly real individuality.

**May 23, 2013 - Tr. Mars Opposite Midheaven**

The transiting Mars strikes again, implying that once more you find yourself in a brief season of assertiveness. Some conflict, inner or outer, requires working out, and now is the time...lest you become tense, argumentative, and difficult.

The Mars aligns with your Fourth House cusp, the very bottom of your birthchart, May 23, 2013. As you might imagine, this point, being buried, represents inward, psychological experience, and often puts emphasis on the home or family. Claim renewal for yourself now, and hold quiet counsel with yourself. Don't let the pressure of events drive you faster than is good for you; you don't need rest so much now as active silence. Vision is rising up in you, if you let it. To attune yourself to this new enlivening, get away from society; be alone, or be with people in your own inner circle -- your real "family" -- and do it in the spirit of the Mars. That will put you in the proper attitude of receptivity.

**May 24, 2013 - Tr. Venus Square Mars**

Keywords: creative relating clashes with your instinctive psychologically deep courage.

**May 24, 2013 - Tr. Mercury Square Mars**

Keywords: creative communication clashes with your instinctive emotionally brave courage.

**May 25, 2013 - Tr. Sun Conjunct Pluto**

Keywords: sensitive personality combines with your characteristic emotional intensity.

**May 26, 2013 at 10:20 PM - Tr. Moon enters Twelfth House**

This month, the transiting Moon crosses into your natal Twelfth House again May 26, 2013 at 10:20 PM. It emerges and a new emotional cycle begins May 28, 2013 at 04:05 PM. As we discussed earlier, this represents a brief period in which you serve your own ultimate interests best by relaxing a bit, taking some extra precautions against physical mishaps, and most importantly, delaying any major new starts, insofar as that's possible.

**May 27, 2013 - Tr. Sun Sextile Saturn**

Keywords: watchful nature stimulates your normal empathetic integrity.

**May 28, 2013 - Tr. Mars Opposite Mercury**

Keywords: sensitive courage is in tension with your inherent employment-oriented dialog.

**May 28, 2013 - Tr. Sun Trine Venus**

Keywords: watchful identity enhances your usual psychologically deep affection.

**May 29, 2013 - Tr. Mars Conjunct Neptune**

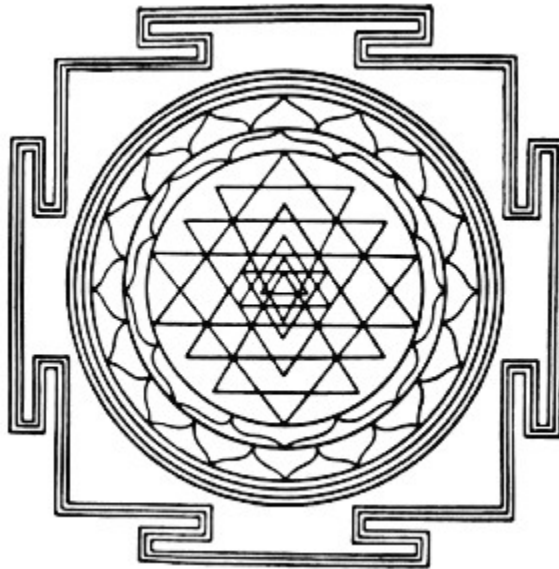
Keywords: emotional swordsmanship fuses with your natural watchful inspiration.

**May 31, 2013 - Tr. Mars Opposite Moon**

Keywords: self-protective swordsmanship opposes your inborn career sensitivity.

# Sky Log

Astrological Report for  
Georgia O'Keefe  
Jun 01, 2012 to Jun 01, 2013  
by Steven Forrest



This report was produced by:

*Dana Gerhardt*

397 Amos Road,

Talent, OR 97540

541-535-7631

[dana@mooncircles.com](mailto:dana@mooncircles.com)



**Your Chart Data**

**Georgia O'Keefe**  
 Nov 15, 1887  
 12:00:00 PM PST  
 Sun Prairie, WI  
 122W47'15", 42N14'45"

<b>Planet</b>	<b>Sign</b>	<b>Position</b>	<b>House</b>	<b>House Cusps</b>
Sun	Scorpio	23°Sc10'	09th	01 00°Aq10'
Moon	Sagittarius	00°Sg06'	10th	02 05°Pi03'
Mercury	Scorpio	27°Sc46' R	10th	03 17°Ar22'
Venus	Libra	07°Li31'	08th	04 24°Ta10'
Mars	Virgo	18°Vi50'	08th	05 13°Ge15'
Jupiter	Scorpio	17°Sc52'	09th	06 04°Ca18'
Saturn	Leo	06°Le32'	07th	07 00°Le10'
Uranus	Libra	15°Li18'	08th	08 05°Vi03'
Neptune	Taurus	28°Ta49' R	04th	09 17°Li22'
Pluto	Gemini	04°Ge14' R	04th	10 24°Sc10'
Midheaven	Scorpio	24°Sc10'		11 13°Sg15'
Ascendant	Aquarius	00°Aq10'		12 04°Cp18'

*Interpretation text copyright 1993 by Steven Forrest  
 Copyright 1985-2008 Matrix Software, Inc.*